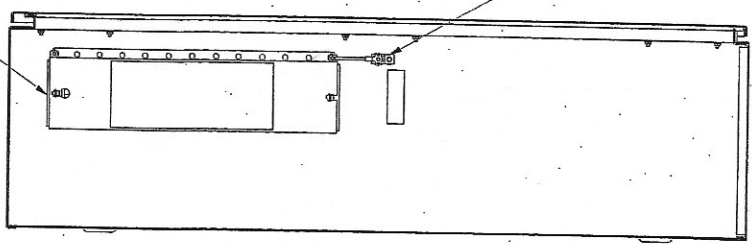
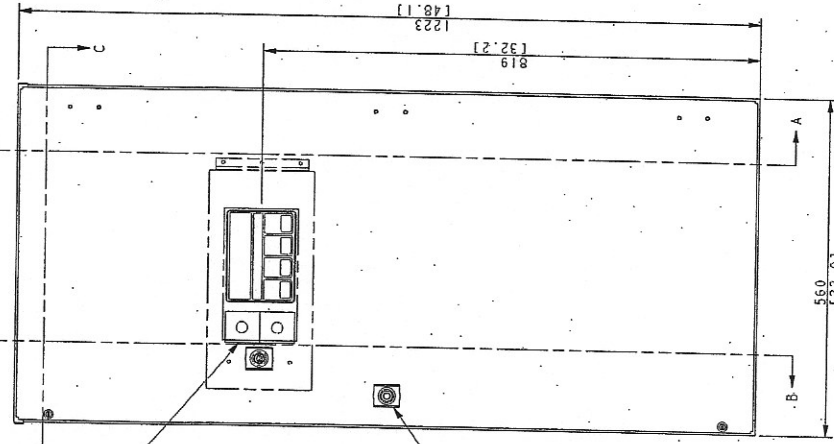


SECURITY COVER (OPTIONAL ON NEMA 1)  
(REQUIRED ON NEMA 3R)

PROGRAMMABLE I/O  
(OPTIONAL)



SECTION A-A



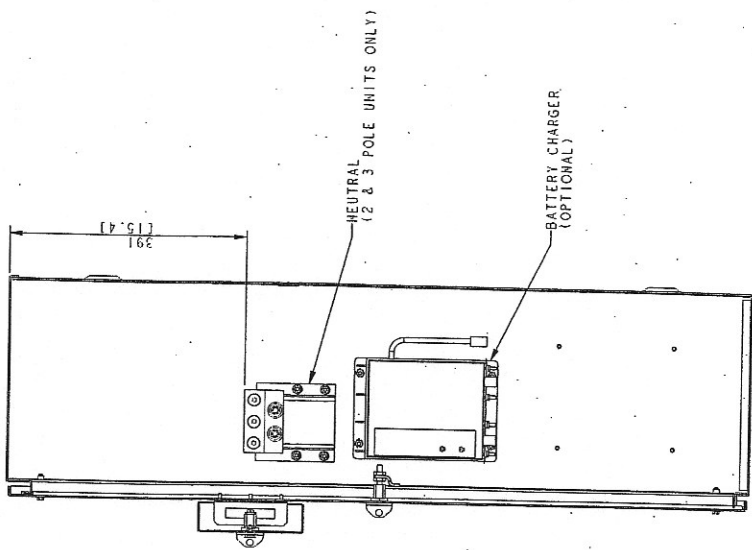
DIMENSIONS IN [ ] ARE INCHES.

FINISH: ANSI 49 GRAY.

REFER TO OPERATOR'S MANUAL PRIOR TO INSTALLATION AND OPERATION OF UNIT.

POWER CABLES AND CONTROL WIRING MUST BE RUN IN METAL CONDUIT.

SECTION B-B

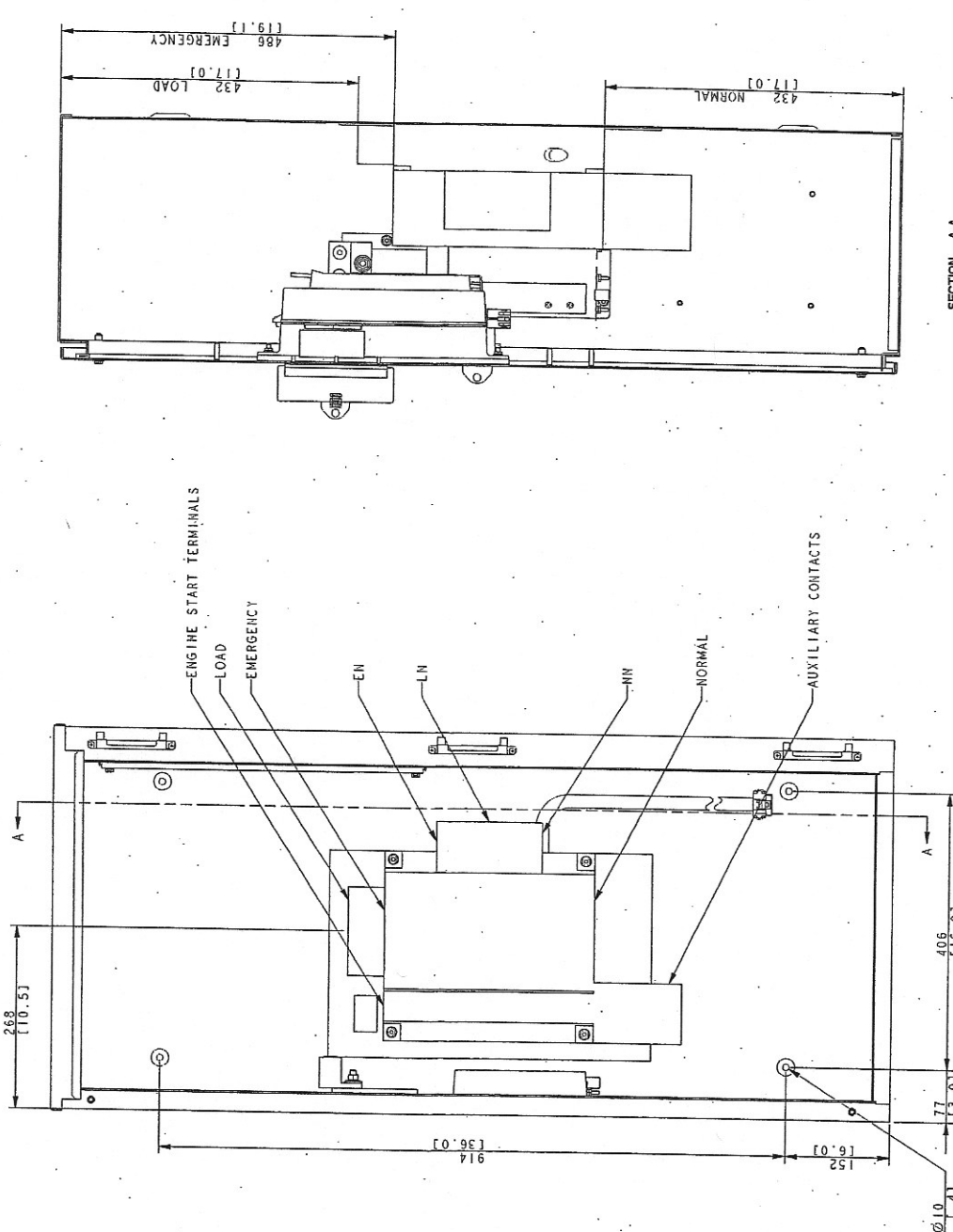


SECTION B-B

REV	DATE	REVISION	BY	DATE	BY	DATE	BY	DATE
-	10-26-01	NEW DRAWING (151511)	WSD		WSD		WSD	
A	1-24-02	(A-2) CONDUIT NOTE ADDED (664659)	WSD		WSD		WSD	
B	3-20-02	SEE SHEET 2 (665504)	WSD		WSD		WSD	
C	2-25-03	(B-7) MANUAL SWITCH NOTES & DIMS. REMOVED. SEE SHEET 2 (690611)	WSD		WSD		WSD	
D	8-26-03	(A-7) CONDUIT NOTE UPDATED: VIEWS UPDATED (695811)	WSD		WSD		WSD	
E	12-16-03	(A-7) CONDUIT NOTE UPDATED: VIEWS UPDATED (695811)	WSD		WSD		WSD	
F	12-16-03	(A-7) CONDUIT NOTE UPDATED: VIEWS UPDATED (695811)	WSD		WSD		WSD	
G	12-16-03	(A-7) CONDUIT NOTE UPDATED: VIEWS UPDATED (695811)	WSD		WSD		WSD	

<b>KOHLER CO. METRIC PROBE</b> POWER SYSTEMS, KOHLER, WI 53041 U.S.A. PROPERTY AND DESIGN OF METALLIS KOHLER CO. REPRODUCTION WITHOUT PERMISSION OF METALLIS KOHLER CO. IS PROHIBITED. ALL RIGHTS OF METALLIS KOHLER CO. ARE RESERVED.	
TITLE: DIMENSION PRINT SCALE: 1:1 SHEET NO.: 2 TOTAL SHEETS: 2	DATE: 10-29-01 DRAWN BY: AJM CHECKED BY: WSD APPROVED BY: WSD

230A BLOW  
240 0000  
NEMA 3 SR



SECTION AA

REV	DATE	BY	REVISION
-	10-26-01	WSD	NEW DRAWING (16571E)
A	1-24-02	WSD	SEE SHEET 1 (16648B)
D	3-20-02	WSD	TERMINAL NOTES CORRECTED (22605)
D	2-20-03	WSD	288 (10-31) WAS 211 (8-31) (59961)
D	2-16-03	WSD	LENS DATED (19841)
E	12-16-03	WSD	LENS DATED (19841)
		WSD	(A-S) TABLE UPDATED (11173)

**KOHLER CO.** METRIC PRO-E  
 POWER SYSTEMS, BOWLER, CT 06044 U.S.A.  
 PROPERTY AND NOT BE LOANED, REPRODUCED, COPIED, OR IN ANY MANNER  
 BE USED FOR ANY OTHER PROJECT WITHOUT THE WRITTEN PERMISSION OF KOHLER CO.

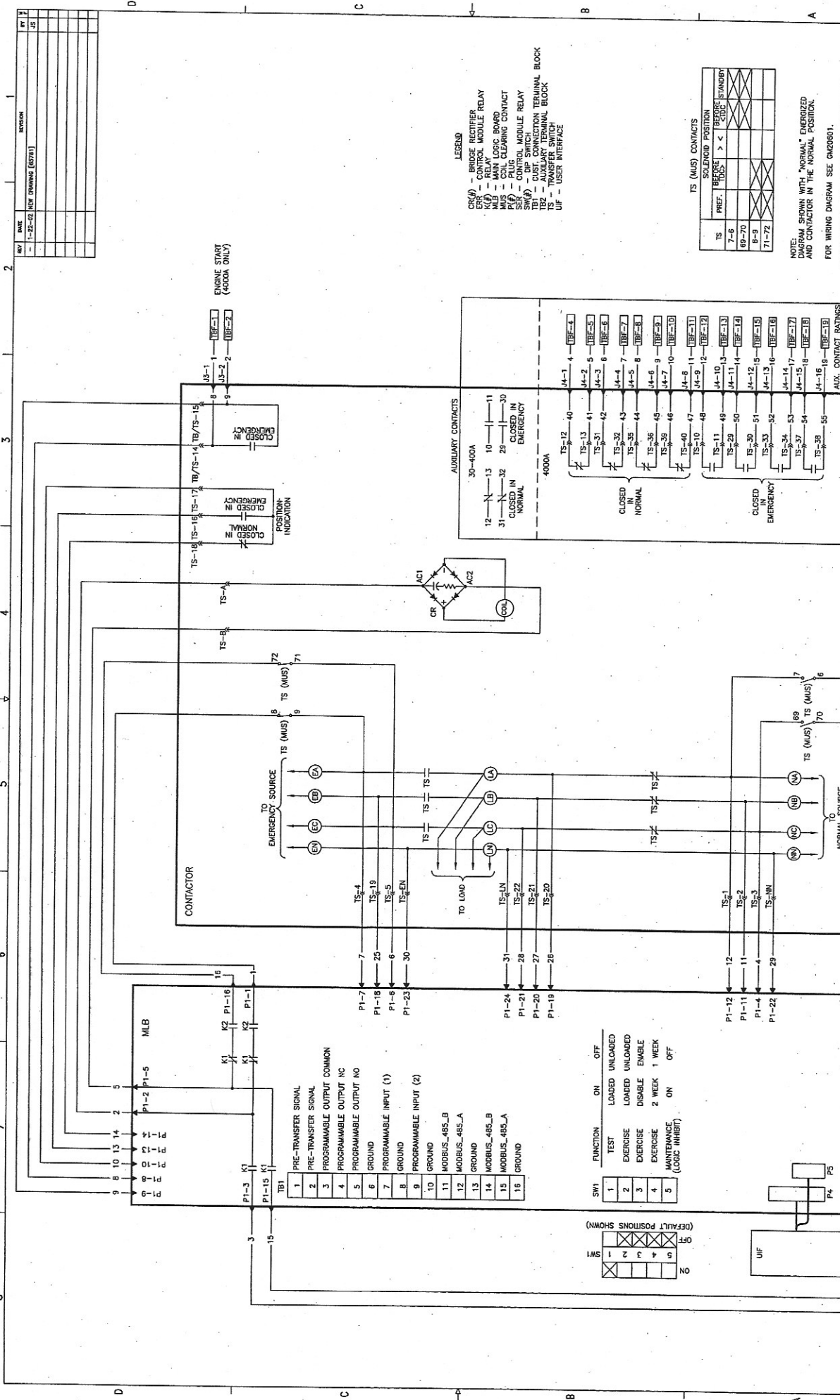
TITLE: **230A 600V 250 400A**  
 DIMENSION PRINT  
 DATE: WSD 10-26-01  
 APPROVALS: WSD 10-26-01  
 DESIGNED: WSD 10-26-01  
 CHECKED: WSD 10-26-01  
 DRAWN: WSD 10-26-01  
 SCALE: 1/16" = 1"

WEIGHTS (KGS)	WEIGHTS (LBS)
2 POLE	3 POLE
52 (115)	56 (123)
59 (131)	

SWITCH RATING (AMPS)	SCREW TYPE TERMINALS FOR EXTERNAL POWER CONNECTION
26-400	RANGE OF AL-CU WIRE SIZES
230 600V	CONTACTOR
	(2) 1/0 TC 250 MCM
	OR (1) #4 TO 600 MCM
	(1) #14 TO 4/0 CU ONLY
	NEUTRAL (2 & 3 POLE)
	GROUND
	#14 TO 1/0

230A 600V  
 250 400A  
 MEHA 3 SR

ADV-6700



**LEGEND**

CR(A) - BRIDGE RECTIFIER  
 ERR - RELAY  
 K(P) - RELAY LOGIC SPANS  
 MUS - COIL CLEARING CONTACT  
 P(U) - PLUG  
 SW(A) - CONTROL MODULE RELAY  
 TS(A) - CONTACT TERMINAL BLOCK  
 TB1 - DUST CONNECTION TERMINAL BLOCK  
 TB2 - AUXILIARY TERMINAL BLOCK  
 U(F) - USER INTERFACE

**TS (MUS) CONTACTS**

TS	PREF.	SOLENOID POSITION
7-6	>	BEFORE
8-7	>	BEFORE
9-8	>	BEFORE
11-10	>	BEFORE
12-11	>	BEFORE
13-12	>	BEFORE
14-13	>	BEFORE
15-14	>	BEFORE
16-15	>	BEFORE
17-16	>	BEFORE
18-17	>	BEFORE
19-18	>	BEFORE
20-19	>	BEFORE
21-20	>	BEFORE
22-21	>	BEFORE
23-22	>	BEFORE
24-23	>	BEFORE
25-24	>	BEFORE
26-25	>	BEFORE
27-26	>	BEFORE
28-27	>	BEFORE
29-28	>	BEFORE
30-29	>	BEFORE

NOTE: DIAGRAM SHOWN WITH "NORMAL" ENERGIZED AND CONTACTOR IN THE NORMAL POSITION.  
 FOR WIRING DIAGRAM SEE GND0691.

**KOHLER CO.**  
 10000 W. 10th Ave., Golden, CO 80401  
 303-440-1000  
 FAX 303-440-1001  
 WWW.KOHLER.COM

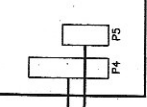
DATE: 1-22-02  
 DRAWN BY: J. J. JONES  
 CHECKED BY: J. J. JONES  
 APPROVALS: J. J. JONES  
 PROJECT: 30-4000A  
 SHEET: 1-1  
 TOTAL SHEETS: 1-1

DIAGRAM, SCHEMATIC

MODEL K  
 30-4000A  
 OPEN TRANSITION

SW1	FUNCTION	ON	OFF
1	TEST	LOADED	UNLOADED
2	EXERCISE	LOADED	UNLOADED
3	EXERCISE	DISABLE	ENABLE
4	EXERCISE	2 WEEK	1 WEEK
5	MAINTENANCE (LOGIC INHIBIT)	ON	OFF

SW2	FUNCTION	ON	OFF
1	TEST	LOADED	UNLOADED
2	EXERCISE	LOADED	UNLOADED
3	EXERCISE	DISABLE	ENABLE
4	EXERCISE	2 WEEK	1 WEEK
5	MAINTENANCE (LOGIC INHIBIT)	ON	OFF



**AUXILIARY CONTACTS**

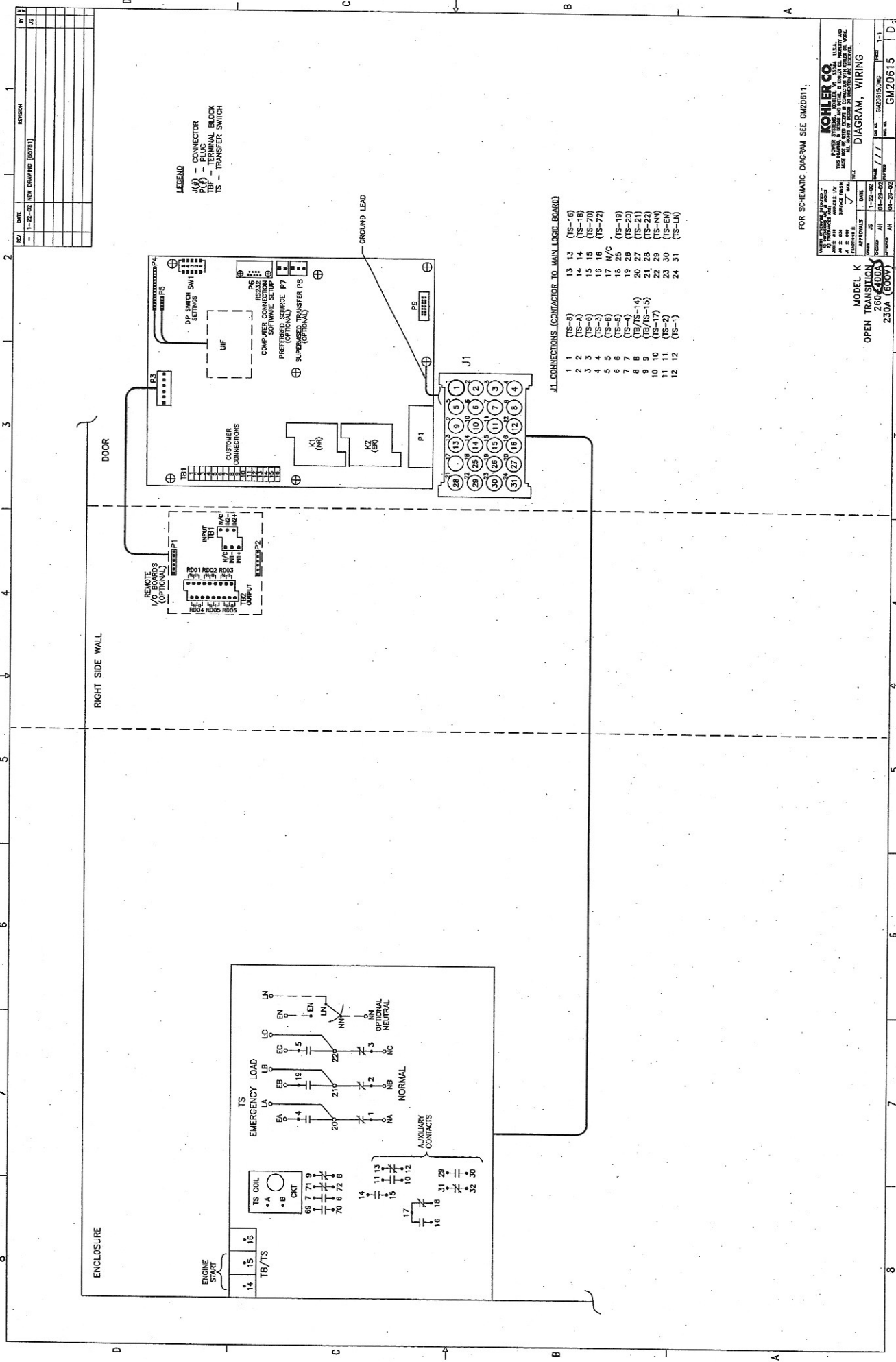
TS	30-4000A	4000A
12	12	12
13	13	13
10	10	10
11	11	11
31	31	31
32	32	32
29	29	29
30	30	30
40	40	40
41	41	41
42	42	42
43	43	43
44	44	44
45	45	45
46	46	46
47	47	47
48	48	48
49	49	49
50	50	50
51	51	51
52	52	52
53	53	53
54	54	54
55	55	55

**TO LOAD**

**TO EMERGENCY SOURCE**

**NORMAL SOURCE**

**AUX. CONTACT RATINGS**  
 10A, 250VAC



FOR SCHEMATIC DIAGRAM SEE GM20811.

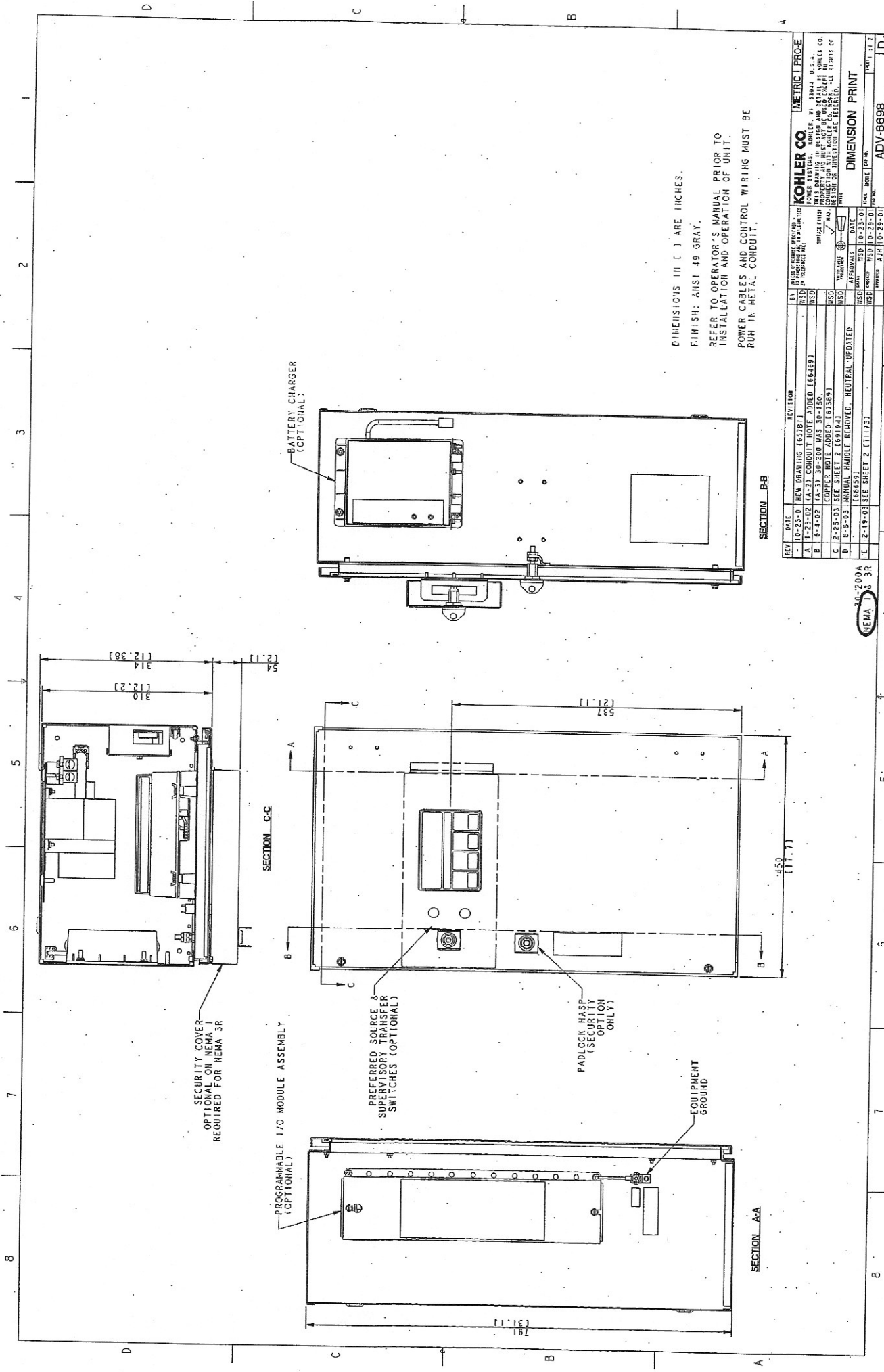
**KOHLER CO.**  
 THIS DRAWING IS THE PROPERTY OF KOHLER CO. AND IS NOT TO BE REPRODUCED OR TRANSMITTED IN ANY FORM OR BY ANY MEANS, ELECTRONIC OR MECHANICAL, INCLUDING PHOTOCOPYING, RECORDING, OR BY ANY INFORMATION STORAGE AND RETRIEVAL SYSTEM.

**MODEL K**  
**OPEN TRANSITION**  
**600-800A**  
**250A (600V)**

**DIAGRAM, WIRING**

**DATE** 1-22-02  
**APPROVALS** JH  
**DESIGNER** JH  
**CHECKER** JH  
**DATE** 01-29-02  
**SCALE** 1-1  
**EXCISE NUMBER** GM20615

REV	DATE	REV. DESCRIPTION	REASON
1	1-22-02	NEW DRAWING [02081]	
2			
3			
4			
5			
6			
7			
8			



DIMENSIONS IN ( ) ARE INCHES.  
 FINISH: ANSI 49 GRAY.  
 REFER TO OPERATOR'S MANUAL PRIOR TO  
 INSTALLATION AND OPERATION OF UNIT.  
 POWER CABLES AND CONTROL WIRING MUST BE  
 RUN IN METAL CONDUIT.

REV	DATE	BY	DESCRIPTION	REVISION
-	10-23-01	NEW WIRING	(65713)	
A	1-23-02	(A-2) CONDUIT NOTE ADDED	(66462)	
B	6-4-02	(A-3) 30-200 WAS 30-150		
C	2-25-03	COPPER NOTE ADDED	(67389)	
D	8-8-03	MANUAL HANDLE REMOVED	(69194)	
E	12-19-03	SEE SHEET 2 (71173)		

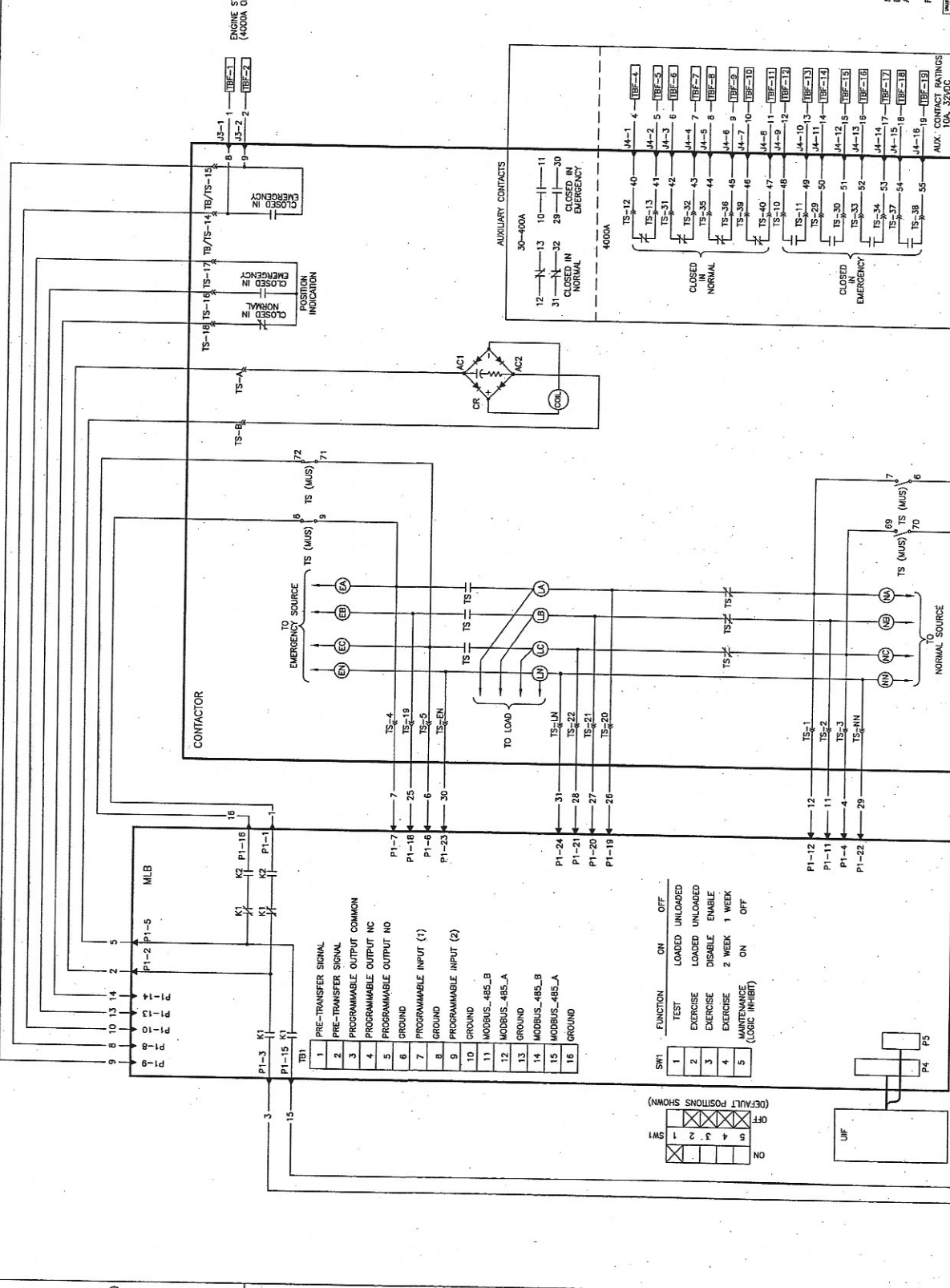
APPROVALS: \_\_\_\_\_ DATE: \_\_\_\_\_  
 DESIGNED BY: \_\_\_\_\_  
 CHECKED BY: \_\_\_\_\_  
 DRAWN BY: \_\_\_\_\_  
 PROJECT NO.: \_\_\_\_\_  
 SHEET NO.: \_\_\_\_\_ OF \_\_\_\_\_  
 DIMENSION PRINT

31-200A  
 NEMA 3R

ADV-6698



REV	DATE	DESCRIPTION
1	1-22-92	REV DRAWING (ESTB)
2		
3		
4		
5		



- LEGEND**
- CR(F) - BRIDGE RECTIFIER
  - MLB - MAIN LOGIC BOARD
  - MILB - MAIN LOGIC BOARD
  - PLC - PULS CLEARING CONTACT
  - PLC - PULS CLEARING CONTACT
  - SW(F) - DIP SWITCH
  - TS (MUS) - TRANSFER SWITCH
  - TS - TRANSFER SWITCH
  - UF - USER INTERFACE

**TS (MUS) CONTACTS**

TS	POSITION	CONTACTS
7-8	STANDBY	7-8
8-9	STANDBY	8-9
9-10	STANDBY	9-10
10-11	STANDBY	10-11
11-12	STANDBY	11-12
12-13	STANDBY	12-13
13-14	STANDBY	13-14
14-15	STANDBY	14-15
15-16	STANDBY	15-16
16-17	STANDBY	16-17
17-18	STANDBY	17-18
18-19	STANDBY	18-19
19-20	STANDBY	19-20
20-21	STANDBY	20-21
21-22	STANDBY	21-22
22-23	STANDBY	22-23
23-24	STANDBY	23-24
24-25	STANDBY	24-25
25-26	STANDBY	25-26
26-27	STANDBY	26-27
27-28	STANDBY	27-28
28-29	STANDBY	28-29
29-30	STANDBY	29-30

NOTE: DIAGRAM SHOWN WITH "NORMAL" ENERGIZED AND CONTACTOR IN THE NORMAL POSITION.  
FOR WIRING DIAGRAM SEE 0420001.

**KOHLER CO.**  
POWER SYSTEMS DIVISION  
10000 W. 10TH AVENUE  
DENVER, CO 80202  
TEL: 303-751-1000  
FAX: 303-751-1001  
WWW.KOHLER.COM

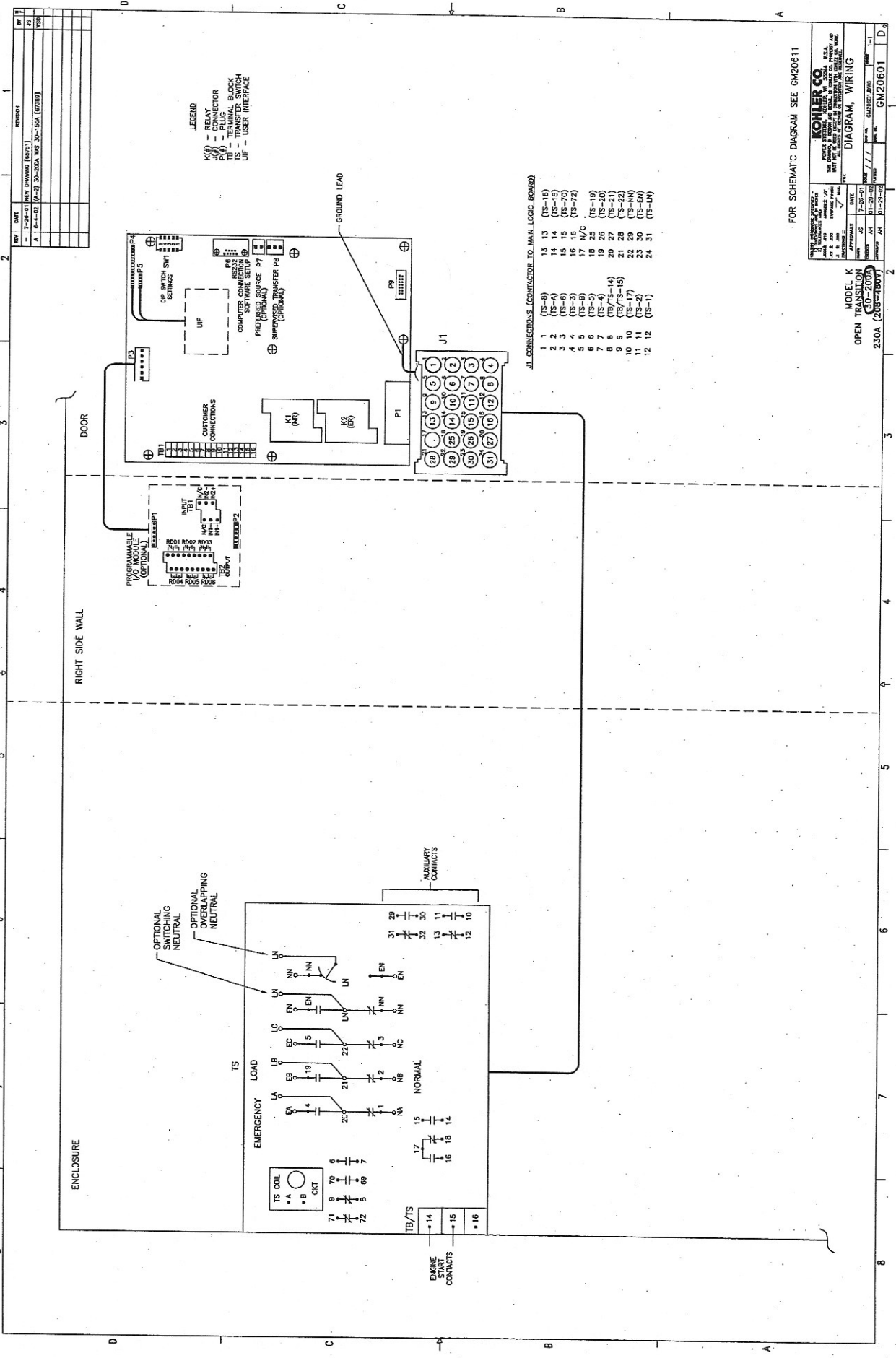
**MODEL K**  
**30-400A**  
**OPEN TRANSITION**

AUX. CONTACT RATINGS  
10A, 32VDC  
10A, 250VAC

DATE: 1-22-92  
DRAWN BY: J. L. HARRIS  
CHECKED BY: J. L. HARRIS  
APPROVED BY: J. L. HARRIS

REV: 1-22-92  
REV: 1-22-92  
REV: 1-22-92

GM20611



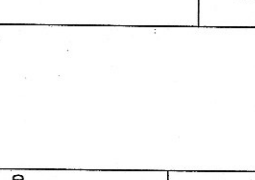
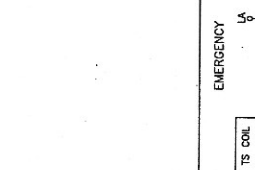
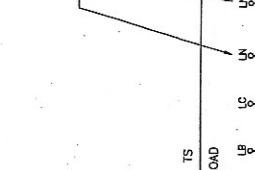
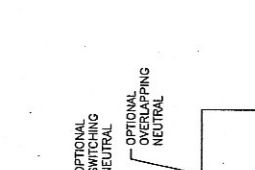
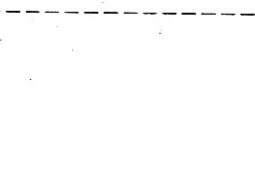
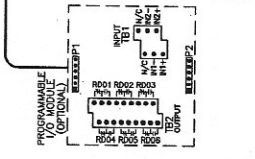
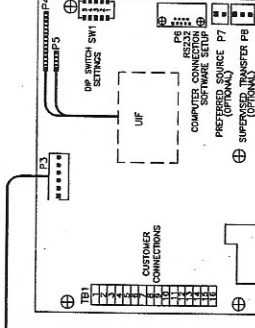
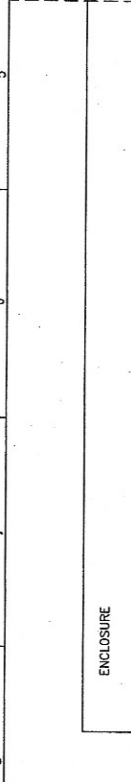
FOR SCHEMATIC DIAGRAM SEE GN20611

**KOHLER CO.**  
 FIRE ALARM CONTROL PANEL  
 MODEL K  
 (208-230V)  
 250A (208-230V)

DATE: 11-11-88  
 DRAWING NO: GN20601  
 SHEET NO: 1

REV	DATE	DESCRIPTION	BY
A	11-11-88	REVISED TO 208-230V (208V)	WJS

ENCLOSURE  
 RIGHT SIDE WALL  
 DOOR





# Extended Two-Year or Two Thousand (2000)-Hour Stationary Standby Limited Warranty

This Kohler Standby Generator System has been manufactured and inspected with care by experienced craftsmen. If you are the original purchaser, Kohler Co. warrants for two years or two thousand (2000) hours, whichever occurs first, that the system will be free from defects in material and workmanship if properly installed, maintained, and operated in accordance with Kohler Co. instruction manuals. A Kohler distributor, dealer, or authorized representative must perform startup.

**This warranty is not effective unless a proper extended warranty registration form and warranty fee have been sent to Kohler Co. within one year of supervised startup.**

During the warranty period, repair or replacement at Kohler Co.'s option will be furnished free of charge for parts, provided an inspection to Kohler Co.'s satisfaction discloses a defect in material and workmanship, and provided that the part or parts are returned to Kohler Co. or an authorized service station, if requested. This extended warranty expires two years after date of startup or after 2000 hours of operation, whichever occurs first.\*

This warranty does not apply to malfunctions caused by damage, unreasonable use, misuse, or normal wear and tear while in your possession.

\*Some restrictions may apply. Contact your Kohler distributor/dealer for full details.

The following will **not** be covered by this warranty:

1. Normal engine wear, routine tuneups, tuneup parts, adjustments, and periodic service.
2. Damage caused by accidents, improper installation or handling, faulty repairs not performed by an authorized service representative, or improper storage.
3. Damage caused by operation with improper fuel or at speeds, loads, conditions, modifications, or installation contrary to published specifications or recommendations.
4. Damage caused by negligent maintenance such as:
  - a. Failure to provide the specified type and sufficient lubricating oil.
  - b. Failure to keep the air intake and cooling fin areas clean.
  - c. Failure to service the air cleaner.
  - d. Failure to provide sufficient coolant and/or cooling air.
  - e. Failure to perform scheduled maintenance as prescribed in supplied manuals.
  - f. Failure to exercise with load regularly.
5. Original installation charges and startup costs.
6. Starting batteries and the following related expenses:
  - a. Labor charges related to battery service.
  - b. Travel expense related to battery service.
7. Engine coolant heaters, heater controls, and circulating pumps after the first year.
8. Rental of equipment during performance of warranty repairs.
9. Parts purchased from sources other than Kohler. Replacement of a failed Kohler part with a non-Kohler part voids warranty on that part.
10. Radiators replaced rather than repaired.
11. Fuel injection pumps not repaired locally by an authorized servicing dealer.
12. Non-Kohler-authorized repair shop labor without prior approval from the Kohler Co. Warranty Department.
13. Engine fluids such as fuel, oil, or coolant/antifreeze.
14. Shop supplies such as adhesives, cleaning solvents, and rags.
15. Expenses incurred investigating performance complaints unless the problem is caused by defective Kohler materials or workmanship.
16. Maintenance items such as fuses, filters, spark plugs, loose/leaking clamps, and adjustments.

A Startup Notification form must be on file at Kohler Co. A Startup Notification form must be completed by Seller and received at Kohler Co. within 60 days after the date of initial startup. Standby systems not registered within 60 days of startup will automatically be registered by Kohler Co. using the Kohler Co. ship date as the startup date.

To obtain warranty service, call 1-800-544-2444 for your nearest authorized Kohler service representative, or write Kohler Co., Generator Service Department, Kohler, WI 53044 U.S.A.

KOHLER CO. SHALL NOT BE LIABLE FOR SPECIAL, INCIDENTAL, OR CONSEQUENTIAL DAMAGES OF ANY KIND including, but not limited to, incidental consequential labor costs, installation charges, telephone charges, or transportation charges in connection with the replacement or repair of defective parts.

This is our exclusive written warranty. We make no other express warranty, nor is anyone authorized to make any in our behalf.

ANY IMPLIED OR STATUTORY WARRANTY, INCLUDING ANY WARRANTY OF MERCHANTABILITY OR FITNESS OF PURCHASE, is expressly limited to the duration of this warranty.

Some states do not allow limitations on how long an implied warranty lasts, or the exclusion or limitation of incidental or consequential damages, so the above limitation or exclusion may not apply to you.

This warranty gives you specific legal rights, and you may also have other rights which vary from state to state.

**KOHLER**  
POWER SYSTEMS

KOHLER CO. Kohler, Wisconsin 53044  
Phone 920-565-3381, Web site [www.kohlergenerators.com](http://www.kohlergenerators.com)  
Fax 920-459-1646 (U.S.A. Sales), Fax 920-459-1614 (International)  
For the nearest sales and service outlet in U.S.A. and Canada  
Phone 1-800-544-2444