

# ARJOHUNTLEIGH

GETINGE GROUP

## CARINO

HEIGHT ADJUSTABLE  
HYGIENE CHAIR



...with people in mind



### **Maintain resident dignity**

Showering in a height-adjustable hygiene chair is also a better alternative than washing in bed when considering hygiene, comfort and dignity. It is generally accepted that showering is a better cleaning method and also healthier for the resident's skin, as soap is rinsed away more effectively.

Maintaining personal dignity during assisted hygiene routines is extremely important to residents. The resident's comfort and dignity are enhanced when sitting in a height-adjustable hygiene chair, which enables comfortable recline and good eye contact with the carer. Showering in *Carino* ensures more dignified and personal one-to-one care, rather than being handled by the two carers often required for washing in bed.

*Carino* is a versatile aid that can provide a better alternative for much more than showering. A range of routines including toileting, hair washing and pedicure can all be managed in an efficient and ergonomically sound way by a single carer.



*Carino* offers an efficient, safe and ergonomic solution for assisted showering that also ensures resident dignity during closely controlled one-to-one hygiene sessions. Hair washing is made easier and more ergonomic, as the carer can avoid strain by adjusting the seat height to the correct working posture.



## A BETTER ALTERNATIVE FOR DAILY HYGIENE

For many residents and patients assisted hygiene routines consist of being washed in bed or showered on a fixed-height shower chair. However, a safer, more efficient alternative is available: showering with dignity using a *Carino*™ height-adjustable hygiene chair.



### Minimize static load

The risk of static load-related strain and injuries is a major cause of concern for carers involved in assisted hygiene routines. Studies have confirmed that carers assisting with washing in bed

or showering using a fixed-height chair are subjected to high static load levels. In fact, when assisting with these sessions only 30-40%<sup>1</sup> of the time is spent working in a sound body position, with a resulting high risk of back injury and pain.

shown that carers spend 75%<sup>1</sup> of their time in sound working positions when using a height-adjustable hygiene chair<sup>1</sup>. And for experienced users, this figure can be increased further<sup>2</sup>.

### Increase efficiency

Showering on a height-adjustable hygiene chair is not only healthier from a static load perspective, it also saves time. Although there is a widespread belief that washing a resident in bed is a quicker method, a study has revealed that showering with a height-adjustable chair can actually be 35% more efficient<sup>3</sup>.



A height-adjustable hygiene chair is the best solution for minimizing static load to protect carers' health and safety. Investigations have

1). Kribbe NE, Kribbe JJ, Postural load of nurses during bathing and showering of patients: Results of a laboratory study, Professional Study, 1996 Nov; 37-39.  
 2). Brinkhoff A, Kribbe NE, The Ergostat program, pilot study of an ergonomic intervention to reduce static loads for caregivers, Professional Safety, 2003.  
 3). Schimmel G, Kribbe NE, The Smart Shower Chair, Final Report of the Zorg voor Beter (Better Care) Smart Shower Chairs project.

# BENEFITS FOR COMFORT, SAFETY AND MOBILITY



## **Caring in comfort**

The resident sits fully supported by the high backrest and head cushion in a reclined position. By utilizing the unit's handset-controlled height-adjustability, the carer can always work comfortably at the correct working height. Every aspect, from foot-operated swivelling footplates to swing away leg-rests, has been designed in a way that combines optimum resident comfort with sound ergonomics.



## **Safer by design**

*Carino* with its unique leg-rests is designed for maximum safety and comfort. It provides a more pleasant experience that has a positive, calming effect on residents. The arched shape of the chair means that the resident is tilted backwards more as the seat is raised, giving a reassuring feeling of security. Full integration with ArjoHuntleigh standing and raising aids creates secure solutions for resident transfers with no need for manual handling by the carer.



## **Promoting mobility**

*Carino* is designed to enable the resident to be more active during the hygiene session, thus stimulating mobility. With the carer in close attendance, it offers a safe environment in which residents can participate in showering as much as possible. Coloured knobs on the armrest provide a good grip for the resident when moving into position on the seat and pulling forward before standing up.

### 1 Height-adjustability



With handset-controlled height-adjustability, the seat can always be fine-tuned to ensure a correct working height for the carer and optimum comfort for the resident.

### 2 Self-adjusting leg-rests



Unique, adjustable 'swing away' leg-rests self-adjusts in an optimum balanced position for individual resident comfort and support sound ergonomic working routines.

### 3 Ergonomic manoeuvring



The integrated grips and handles allow the carer to find an ergonomic grip for any manoeuvre. Low-friction castors make manoeuvring exceptionally smooth.



### Smooth integration



*Carino* offers easy integration for efficient toileting routines. Compatibility with our standing and raising aids provides a safe transfer method to and from the toilet.

### 4 100% availability



While one of the two rechargeable batteries is powering *Carino*, the other is in the charger, so the hygiene chair is always available for use.

### 5 Good access for washing



The open design of the seat enables efficient toileting and provides the carer with good access for discreet washing of intimate parts of the body.

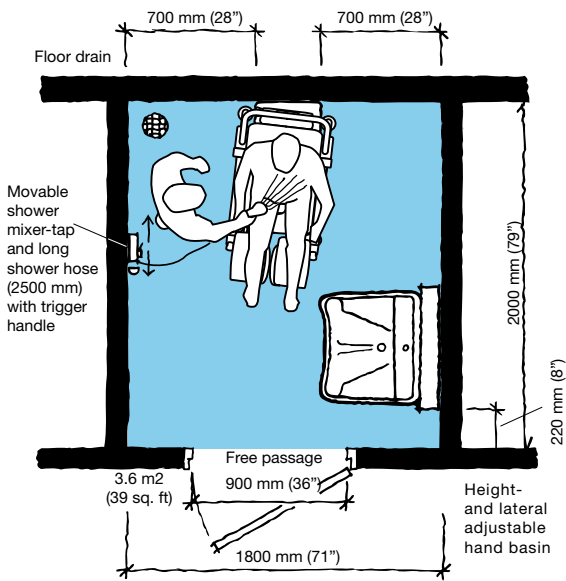
### Easy disinfection



Design features such as flat surfaces, the foldable seat and detachable leg-rest, back-rest and head cushion enable easy, efficient cleaning and disinfection routines.

# PRODUCT SPECIFICATIONS

## Space requirement



Blue area shows the minimum working area required for the staff to be able to use the mechanical aids in an ergonomic way from one side.

## Product Information

Chassis width	624 mm (24 5/8")
Chassis length	857 mm (33 3/4")
Seat lowest position	450 mm (17 3/4")
Seat highest position	1050 mm (41 3/8")
Seat (Width)	475 mm (18 2/3")
Seat (Length)	450 mm (17 2/3")
Weight	42 kg (93 lbs)
Safe Working Load (SWL)	140 kg (308 lbs)
Approvals	TÜV

## Accessories



Bed pan

Toilet adapter

Seat cushion

Back cushion

## Mobility Gallery

Suitable for Barbara and Carl



**B Barbara**, who can support herself to some degree

**C Carl**, who sits in a wheelchair and has little capacity to support himself

Please contact ArjoHuntleigh for further information on the Mobility Gallery™.

Only ArjoHuntleigh designed parts, which are designed specifically for the purpose, should be used on the equipment and products supplied by ArjoHuntleigh. As our policy is one of continuous development we reserve the right to modify designs and specifications without prior notice.

© and ™ are trademarks belonging to the ArjoHuntleigh group of companies. © ArjoHuntleigh, 2012.

# ARJOHUNTLEIGH

## GETINGE GROUP

[www.ArjoHuntleigh.com](http://www.ArjoHuntleigh.com)



**ArjoHuntleigh**

PO Box 61

SE-241 21 Eslöv

SWEDEN

Phone: +46 413 645 00

Fax: +46 413 645 63

**GETINGE GROUP** is a leading global provider of products and systems that contribute to quality enhancement and cost efficiency within healthcare and life sciences. We operate under the three brands of **ArjoHuntleigh**, **GETINGE** and **MAQUET**. **ArjoHuntleigh** focuses on patient mobility and wound management solutions. **GETINGE** provides solutions for infection control within healthcare and contamination prevention within life sciences. **MAQUET** specializes in solutions, therapies and products for surgical interventions and intensive care.