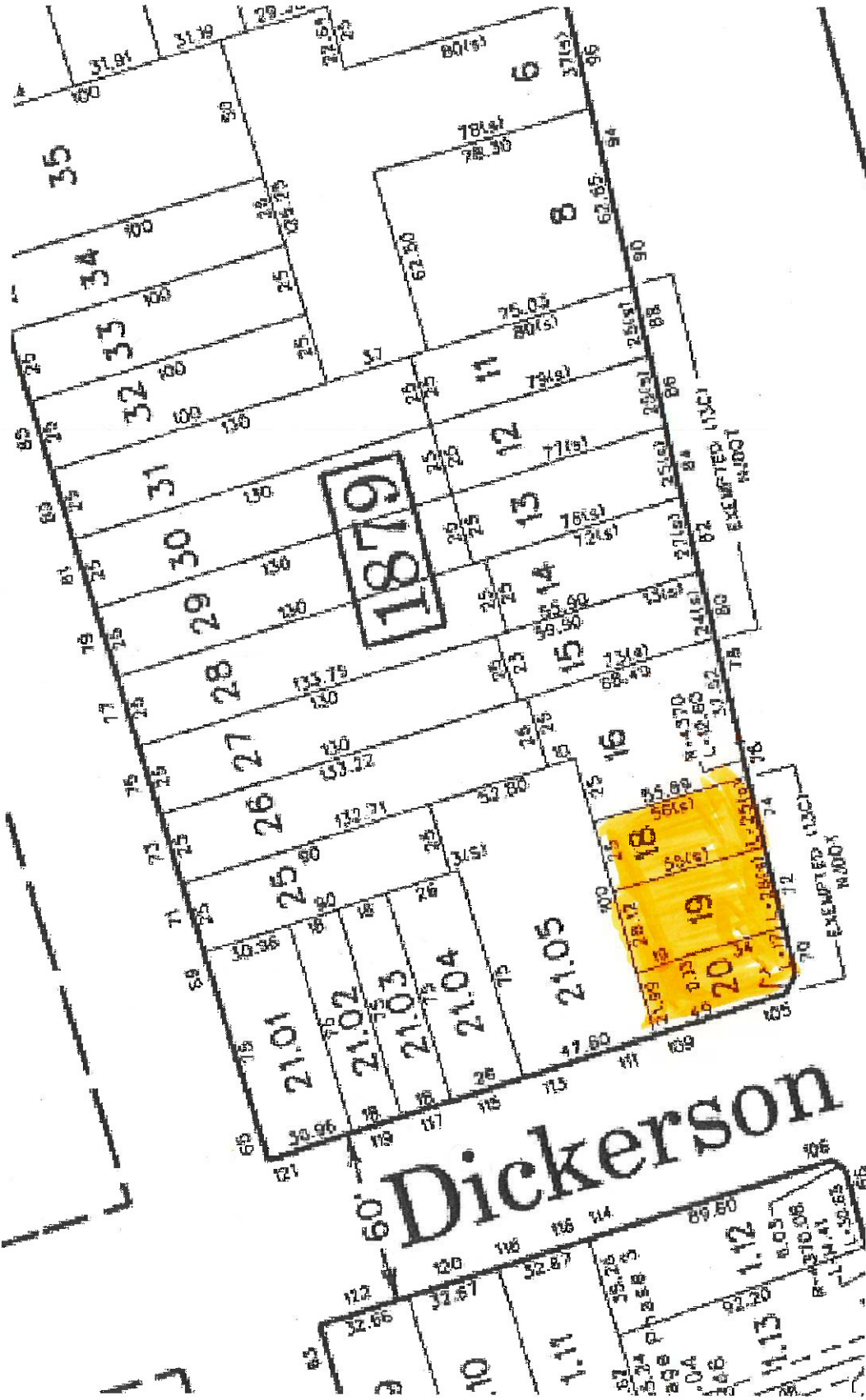


Parcels VX561B, VX562 and VX563B, as indicated on a map entitled: "New Jersey Department Of Transportation, GENERAL PROPERTY PARCEL MAP, University Heights Connector, First Street Between West Market Street, Showing Existing Right Of Way And Parcels To Be Acquired In The City Of Newark, County Of Essex, December 2003 ";

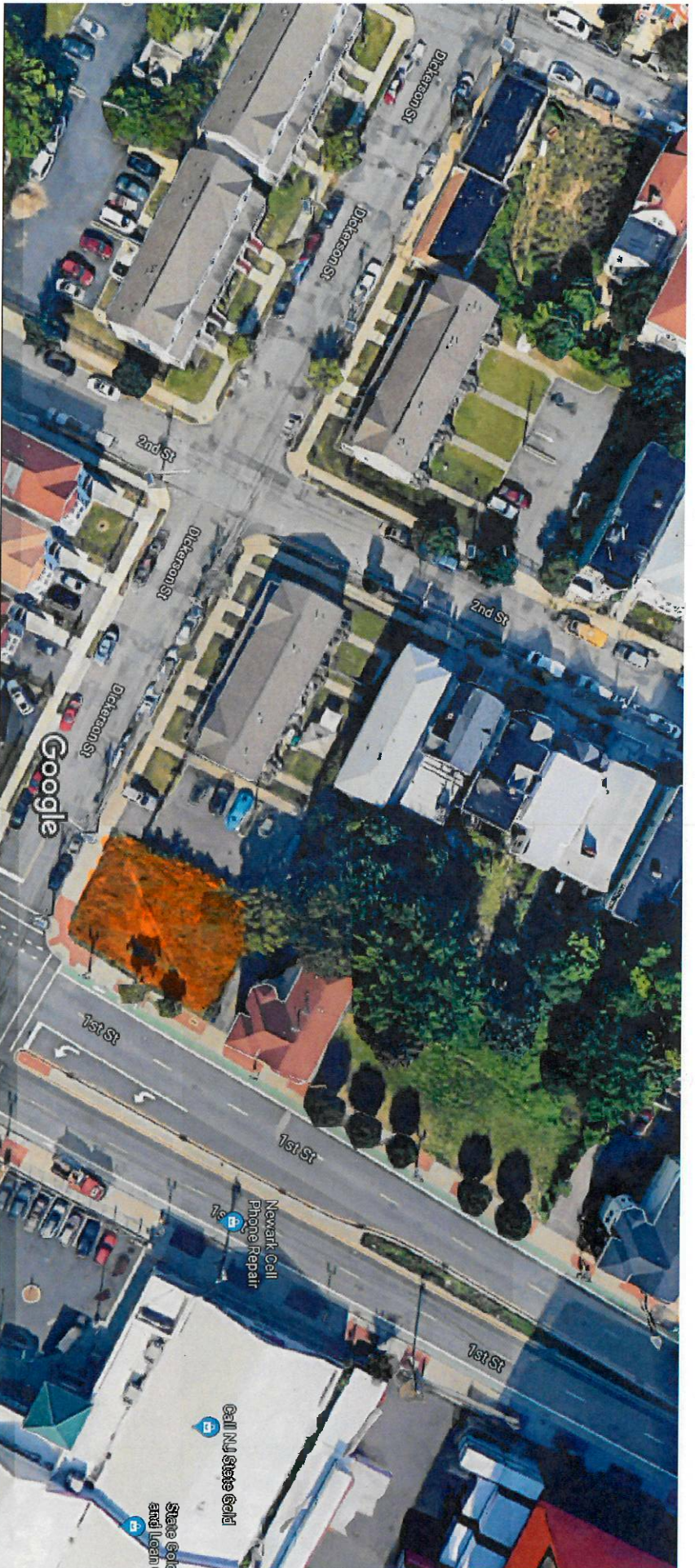
Parcels VX561B, VX562B and VX563B, including specifically all the land and premises located at about Station 101+380 (First Street Base line Stationing), bounded on the southwest by the northeasterly line of Dickerson Street; on the northwest by the northwesterly line of parcels VX561B, VX562B and VX563B, as shown on the aforesaid map; on the northeast by lands now or formerly of Sylvan/summer Homes II, L.L.C.; and on the southeast and south by the proposed line of First Street, as laid down on the aforesaid map; all as shown on the aforesaid map; containing a total of 5092 square feet more or less;

SUBJECT TO all public utility easements, recorded or unrecorded, affecting the herein described premises as shown on the aforesaid map.





University Heights Connector  
Parcels VX561B, VX562, VX563B



Imagery ©2019 Google, Map data ©2019 Google 10 m

University Heights Connector  
Parcels VX561B, VX562, VX563B