

Parcels VX564B, VX565B, VX566B, VX567B & VX658B, as indicated on a map entitled: "New Jersey Department Of Transportation, GENERAL PROPERTY PARCEL MAP, University Heights Connector, First Street Between West Market Street, Showing Existing Right Of Way And Parcels To Be Acquired In The City Of Newark, County Of Essex, December 2003 ";

Parcels VX564B, VX565B, VX566B, VX567B & VX658B, including specifically all the land and premises located at about Station 101+420 (First Street Base line Stationing), bounded on the southwest by lands now or formerly of Sylvan/summer Homes II, L.L.C.; on the northwest by lands now or formerly of Juan Marte and Iris Rosado; on the northeast, northwest and southwest by lands now or formerly of Charlie Oliver and Vivian Oliver; on the northwest by lands now or formerly of Jane Boyd and Janie Boyd; lands now or formerly of Carleton Blue; and lands now or formerly of Wilfredo Cardona Jr. and Nidio Cardona; and on the southeast by the proposed line of First Street, as laid down on the aforesaid map; all as shown on the aforesaid map; containing a total of 9452 square feet more or less;

SUBJECT TO all public utility easements, recorded or unrecorded, affecting the herein described premises as shown on the aforesaid map.

GPPM SHEET 2
MATCH LINE STA. 101+360



University Heights Connector
Parcels VX564B, VX565B, VX566B, VX567B, VX658B

- NOTES:
- SEE GPPM SHEET 1 OF 9 FOR TABULATION OF PARCEL DIMENSIONS
 - P.A. CALCULATED BY COMPUTER (GDD) FROM DEED PLOT

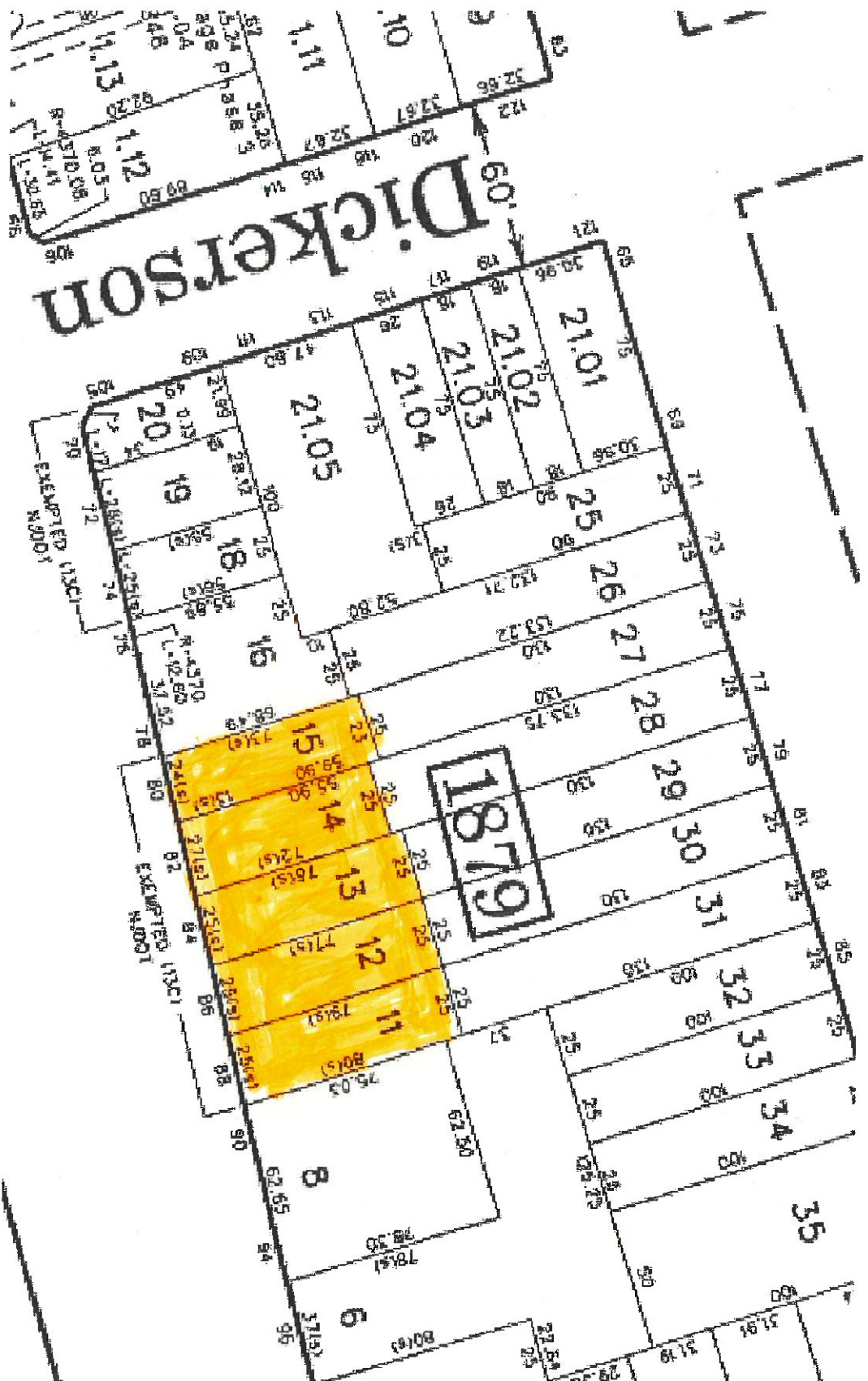
AMERCOM CORPORATION
Civil Engineering

CONSTRUCTION PROJECT: UNIVERSITY HEIGHTS CONNECTOR



NEW JERSEY DEPARTMENT OF TRANSPORTATION
GENERAL PROPERTY PARCEL MAP
UNIVERSITY HEIGHTS CONNECTOR
FIRST STREET BETWEEN WEST MARKET STREET
AND SUSSEX AVENUE
Showing Existing Right of Way
And Parcels To Be Acquired In The

City of Newark
County of Essex
December 2003



University Heights Connector
Parcels VX564B, VX565B, VX566B, VX567B, VX658B



Imagery ©2019 Google, Map data ©2019 Google 20 m

University Heights Connector
Parcels VX564B, VX565B, VX566B, VX567B, VX658B