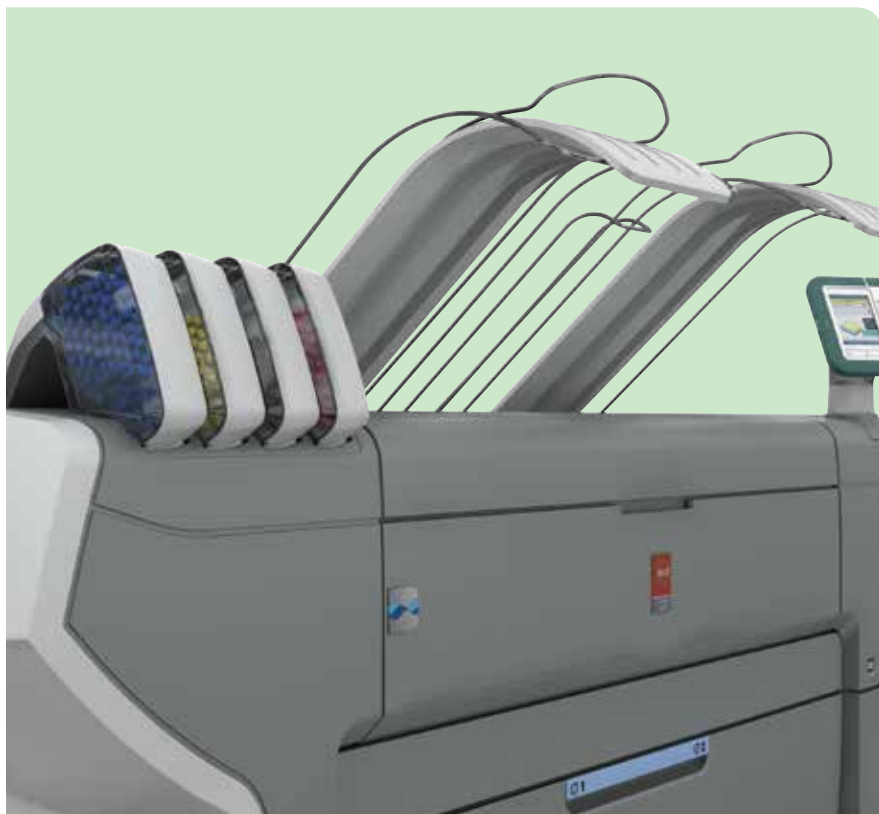






Build a Colorful World



Océ ColorWave 650 printing system

Large format black & white and color
on one productive system



Build a Colorful World

- All-around productivity
- Effortless operation
- Océ CrystalPoint® technology quality
- Sustainability secure





Océ ColorWave 650 printing system

Large format black & white and color on one productive system

Print, copy, and scan without sacrificing productivity or quality with the Océ ColorWave® 650 printing system. Now you can print superb quality — in black & white and color — on a single device using proven, award-winning Océ CrystalPoint technology.

The Next Wave in speed, efficiency, and flexibility

The Océ ColorWave 650 printing system builds on the proven success of its predecessor, the Océ ColorWave 600 printer. It has been enhanced with a number of improvements that offer the Next Wave in speed, efficiency and flexibility.



THE NEXT WAVE...

- **Speed:** prints up to 50% faster than its predecessor
- **Efficiency:** the use of copy and scan templates and the integrated online folder saves time on document tasks
- **Flexibility:** manage, print, and share documents at your desktop via your web browser and print directly from a USB flash drive

Océ ColorWave 650 printing system

ALL-AROUND PRODUCTIVITY

The Océ ColorWave 650 printing system can print in black & white and color at up to 210 D-size prints per hour for all-around productivity. It can hold up to six media rolls and prints come out dry, cut to size and ready to use. With the optional online folder, different folded packages can be prepared and printed right from your desktop.

EFFORTLESS OPERATION

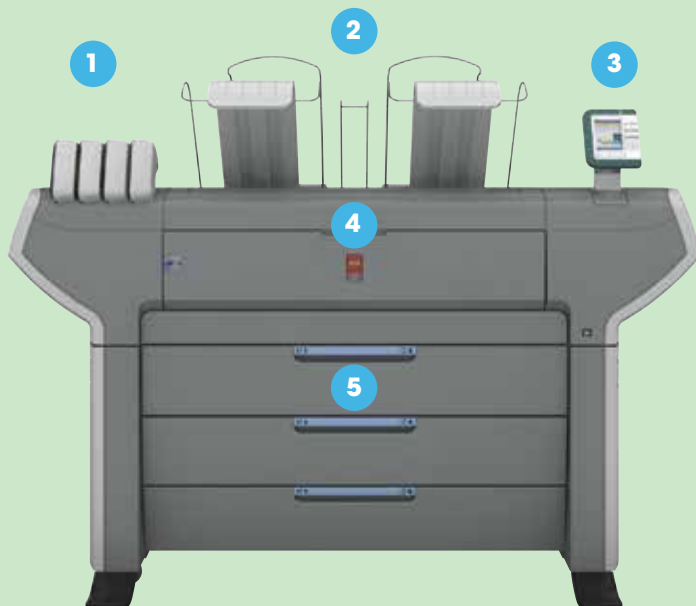
The system simplifies routine tasks to save time and to ensure first-time-right output. Define up to five copy and scan templates with your most common settings. Then just press the green button and the system does the rest. You can also print files directly from a USB flash drive and set specific settings if necessary via the user panel. Whether copying, scanning or printing, the system can be set-up to help you get the correct results at the touch of a button.

OCÉ CRYSTALPOINT TECHNOLOGY QUALITY

The patented Océ CrystalPoint technology helps ensure robust, waterfast prints with sharp lines, high readability of fine details and smooth, even area fills. The high-quality prints, which are consistent over time and on different machines, have a unique silk-shine look and feel, independent of the type of media you use.

SUSTAINABILITY SECURE

The unique Océ TonerPearls® toner make for a totally clean system: there's no fine dust, no odor and minimal waste disposal.



1 OCÉ TONERPEARL CARTRIDGES

You can quickly and easily handle the Océ TonerPearls toner with almost no risk of getting residue on your hands or in the air.

2 TOP DELIVERY TRAY

The top delivery tray can hold up to 100 prints.

3 COLOR USER PANEL

The user panel allows you to quickly scroll through the menus to monitor the media and toner stock and to perform maintenance tasks correctly.

4 IMAGING DEVICES

The eight imaging devices, two per color, move across the media at high speed, jetting the toner gel onto the media. As a result, a crisp print quality is achieved.

5 MEDIA

The 42-inch wide printer holds up to six media rolls, each containing up to 650 feet of media. Supports 2-inch or 3-inch cores.

OCÉ TC4 SCANNER (OPTIONAL)

SUPERIOR SCAN TECHNOLOGY

- Optimal quality and reliability for monochrome and color scanning
- A single CCD camera ensures consistent image quality, even with transparencies or folded drawings

EASE OF USE

- Copy and scan templates for commonly performed actions

CONSISTENT COLOR SCANNING

- Océ Color Image Logic™ technology provides right-first-time results
- Automatic background compensation offers clean digital images even with demanding originals

IDEAL PRODUCTIVITY

- Fast processing on the controller frees the scanner quickly
- True Concurrency — fully utilize the scanner for copying or scanning while printing is taking place

OCÉ COLORWAVE 650 PRINTER + OCÉ 2400 FANFOLD

CONVENIENT ONLINE FOLDING

With the fully integrated Océ 2400 fanfold (optional) you can immediately pick up your fanfolded color or monochrome drawings, even long plots. Fanfolding saves time and avoids creased drawings. Instead of maneuvering a set of large format documents you have well organized piles to work with. The narrow fold unit allows you to fanfold 4-inch panels, for efficient map production.

OCÉ COLORWAVE 650 PRINTER + OCÉ 4312 FULLFOLD

PRODUCTIVE ONLINE FOLDING

If you combine your Océ ColorWave 650 printing system with the Océ 4312 fullfold (optional), you can automatically fold large format prints, ready to use. The crossfolded documents can easily be retrieved from the belt unit. In addition to the standard folding programs you can create your own programs, which increases your flexibility to respond to future demands. As an option, an extended stacker can be installed, allowing you to stack 150 additional folded E-size prints.



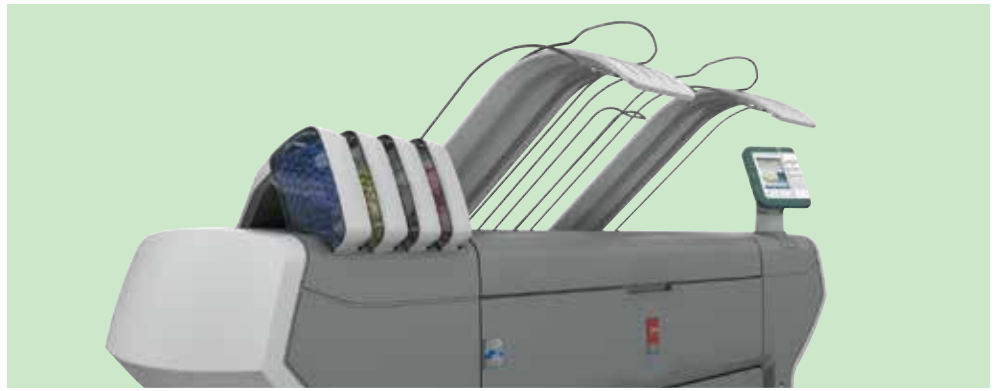
Océ TC4 scanner (optional)



Océ ColorWave 650 printer +
Océ 2400 fanfold



Océ ColorWave 650 printer +
Océ 4312 fullfold



TECHNOLOGY	
Description	
Imaging technology	
Toner	
Speed	
Resolution	
GENERAL	
Configuration	
Size main engine (W x D x H)	
Weight main engine	
Certifications	
PAPER HANDLING	
Paper rolls	
Maximum paper capacity	
Paper weight	
Roll width	
Output delivery	
Media type (www.mediaguide.oce.com)	
CONTROLLER	
Description	
Client operating system support	
Processor	
Memory	
Hard disk	
Interface	
Page description language	
Security	
Options	
SCANNER	
Description	
Scan resolution	
Scan speed	
Scan format	
Scan destination	
Original width	
Original length	
Original thickness	
Zoom	
Preset modes	
Size scanner (W x D x H)	
Weight scanner	

Large format black & white and color on one productive system
Océ CrystalPoint technology
Océ TonerPearls toner for CYMK, 500 grams per color
B&W: 1,459 sq. ft./hr.
Color: 1,361 sq. ft./hr.
600 dpi
Printer only or multifunctional
5.17' x 6.89' x 2.93'
430–606 lbs. (195–275 kg)
EPA ENERGY STAR®, TüV GS, CETECOM, CE, UL, cUL, CB, FCC Class A
2–6 rolls
3,900 ft., 650 ft. on a roll (1200 m, 200 m per roll)
16–40 lb. bond (60–160 g/m ²); up to 8 mil. specialty media
11"–42" (297–1067 mm)
Top delivery tray, 42-inch stacker, folder, take-up unit
Paper: Plain 75-90-120-160g (Bond), Recycled, Colored, Fluorescent, Blueback
Specialties: Polyester film, Self-adhesive film/paper, Tyvek™, Roll up film, Soft banner, Vellum
Océ PowerM® Plus controller with optional Windows® Embedded Standard 7 controller
Windows® 2000/XP/Windows Vista®/7/Windows Server® 2003/Windows Server® 2008, Terminal Server, Citrix® MetaFrame, Mac OS® 9/Mac OS X® (Adobe® PostScript® 3™/PDF driver)
E8400 3.0 GHz Core 2 Duo
4 GB DDR2 DRAM
2 x 500 GB
10/100/1000 Base-T with RJ45
HP-GL, HP-GL/2, TIFF, JPEG, Adobe PostScript 3/PDF, CALS-I, NIRS, ASCII, CalComp, C4
E-shredding
Adobe Postscript 3/PDF printing
Adobe fonts: Chinese Traditional/Chinese Simplified/Japanese/Korean
Océ TC4 scanner with Océ Direct Scan color technology (single camera, single mirror)
Optical 575 dpi, maximum 600 dpi
B/W: maximum 3.3"/sec. (5 m/min.)
Color: maximum 2.8"/sec. (4 m/min.)
TIFF, PDF, PDF/A, JPEG, CALS, multi-page PDF, multi-page PDF/A and multi-page TIFF
Network Directory, Smart Inbox
8"–40" (200–1016 mm)
8"–72' (200 mm–22 m)
Maximum 0.12" (3 mm)
With thick originals option: maximum 0.59" (15 mm)
10–1000 %
Lines & text, Map, Artwork, Photo, Grays & lines, Dark original, Blueprint
51.2" x 25.6" x 51.2" (130 x 65 x 130 cm)
154 lbs. (70 kg)



OCÉ 2400 FANFOLD

Paper feed
Folding speed
Paper width
Paper length
Paper weight
Folding programs
Folding standards
Folded package width
Binding edge

Automatic or manual
Aligned to print speed
8.5" – 36" (210–930 mm)
8.5" – unlimited (210 mm–unlimited)
16–32 lb. (60–120 g/m²)
8 standard programs, custom programs: unlimited
DIN824, AFNOR, ANSI, US-sizes
4" – 16.5" (100–420 mm)
0–1.2" (0–30 mm)

OCÉ 4312 FANFOLD

Paper feed
Folding speed
Paper width
Paper length
Paper weight
Folding programs
Folding standards
Folded package width
Folded package length
Binding edge
Options

Automatic or manual
Aligned to print speed
8.5" – 36" (210–930 mm)
8.5" – 98.4" (210–2500 mm)
16–32 lb. (60–120 g/m²)
8 standard programs, custom programs: unlimited
DIN824, AFNOR, ANSI, US-sizes
7" – 16.5" (180–420 mm)
Maximum 59" (maximum 1500 mm) (20 lb.)
0–1.2" (0–30 mm)
Extended stacker (for 150 extra folded E-size prints)

ENVIRONMENTAL

Sound power level
Ozone emissions
Power requirements
Power consumption

Sleep: less than 41 dB
Ready: less than 53 dB
Active: less than 67 dB
Zero
100–120 V, 200–240 V; 50/60 Hz
Off: less than 0.5 W
Ready: 210 W
Active: 360 W
EPA ENERGY STAR sleep mode: 72 W total system (less than 1 W engine, 71 W DFE)

WORKFLOW

Description
Printer drivers
Job submission
Job management
Accounting
Templates

Concurrent print, copy, scan, and file processing
Microsoft® certified Windows® driver, Adobe PostScript 3 driver
Océ Publisher Express, Océ Publisher Select™ software
Print and history queue, Smart inbox, Manage queue, Océ Express WebTools, Secure controller access
Software module in Océ Express WebTools
Option: Océ Account Console
5 copy templates, 5 scan templates

OPTIONS

Hardware
Software

Océ 2400 fanfold, Océ 4312 fullfold, delivery belts, 42-inch stacker, take-up unit
Océ Repro Desk® Studio, Océ Repro Desk Select, Océ Repro Desk Professional

Océ Environmental Certifications



Mixed Sources
Product group from well-managed
forests and other controlled sources
www.fsc.org Cert no. SCS-COC-00856
© 1996 Forest Stewardship Council



Partners Certifications



Creating global leadership in printing

Canon and Océ join forces to create the global leader in the printing industry. For our customers this combines Canon and Océ technology with the support of sales and service organizations. Look to the new Canon-Océ combination for:

- Enterprise printing in the office and corporate printroom
- Large format printing of technical documentation, signage and display graphics
- Production printing for marketing service bureaus and graphic arts
- Business services for document process outsourcing

For information and services, visit us at:
www.cla.canon.com

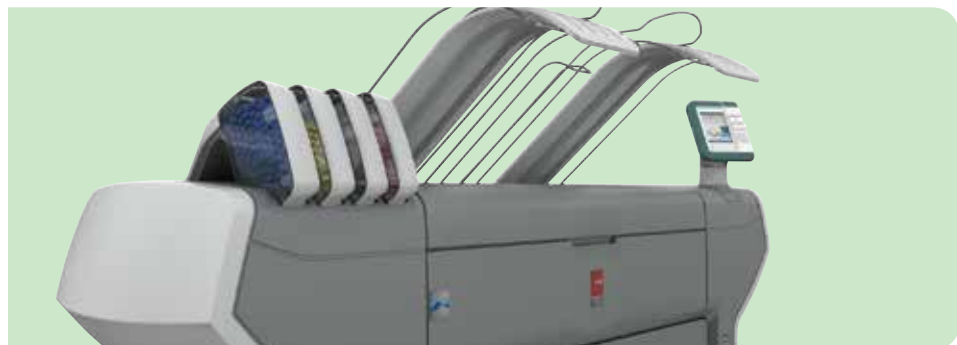
Canon

www.cla.canon.com

Canon U.S.A., Inc.
One Canon Park
Melville, NY 11747

Build a Colorful World

Océ ColorWave 650 printing system



Large format black & white and color on one productive system

Print, copy, and scan without sacrificing productivity or quality with the Océ ColorWave® 650 printing system. Now you can print superb quality—in black & white and color—on a single device using proven, award-winning Océ CrystalPoint® technology.

The Océ ColorWave 650 is a versatile, highly-productive large format system—with its ability to print in black & white and color at up to 210 D-size prints per hour. The printer can hold up to six media rolls and prints come out dry, cut to size and ready to use. With the optional online folder, different folded packages can be prepared and printed right from your desktop. A smart way to build a colorful world.

OCÉ CRYSTALPOINT QUALITY

The patented Océ CrystalPoint technology helps ensure robust, waterfast prints with sharp lines, high readability of fine details and smooth, even area fills. The high-quality prints, which are consistent over time and on different machines, have a unique silk-shine look and feel, independent of the type of media you use.

EFFORTLESS OPERATION

The system simplifies routine tasks to save time and to ensure first-time-right output. Define up to five copy and scan templates with your most common settings. Then

just press the green button and the system does the rest. You can also print files directly from a USB flash drive and set specific settings if necessary via the user panel. Whether copying, scanning or printing, the system can be set-up to help you get the correct results at the touch of a button.

SUSTAINABILITY SECURE

The unique Océ TonerPearls® toner make for a totally clean system: there's no fine dust, no odor and minimal waste disposal.





Creating global leadership in printing

Canon and Océ join forces to create the global leader in the printing industry. For our customers this combines Canon and Océ technology with the support of sales and service organizations. Look to the new Canon-Océ combination for:

- Enterprise printing in the office and corporate printroom
- Large format printing of technical documentation, signage and display graphics
- Production printing for marketing service bureaus and graphic arts
- Business services for document process outsourcing

For information and services, visit us at: www.cla.canon.com

TECHNOLOGY	
Description	Large format black & white and color on one productive system
Imaging technology	Océ CrystalPoint technology
Toner	Océ TonerPearls toner for CYMK, 500 grams per color
Speed	B&W: 1,459 sq. ft./hr. Color: 1,361 sq. ft./hr.
Resolution	600 dpi
GENERAL	
Configuration	Printer only or multifunctional
Size main engine (W x D x H)	5.17' x 6.89' x 2.93'
Weight main engine	430–606 lbs. (195–275 kg)
Certifications	EPA ENERGY STAR®, TüV GS, CETECOM, CE, UL, cUL, CB, FCC Class A
PAPER HANDLING	
Paper rolls	2–6 rolls
Maximum paper capacity	3,900 ft., 650 ft. on a roll (1200 m, 200 m per roll)
Paper weight	16–40 lb. bond (60–160 g/m ²); up to 8 mil specialty media
Roll width	11"–42" (297–1067 mm)
Output delivery	Top delivery tray, 42-inch stacker, folder, take-up unit
Media type (www.mediaguide.oce.com)	Paper: Plain 75-90-120-160g (Bond), Recycled, Colored, Fluorescent Blueback Specialties: Polyester film, Self-adhesive film/paper, Tyvek™, Roll up film, Soft banner, Vellum
CONTROLLER	
Description	Océ PowerM® Plus controller with optional Windows® Embedded Standard 7 controller
Client operating system support	Windows® 2000/XP/Windows Vista®/7/Windows Server® 2003/Windows Server® 2008, Terminal Server, Citrix® MetaFrame, Mac OS® 9/Mac OS X® (Adobe® PostScript® 3™/PDF driver)
Processor	E8400 3.0 GHz Core 2 Duo
Memory	4 GB DDR2 DRAM
Hard disk	2 x 500 GB
Interface	10/100/1000 Base-T with RJ45
Page description language	HP-GL, HP-GL/2, TIFF, JPEG, Adobe PostScript 3/PDF, CALS-I, NIRS, ASCII, CalComp, C4
Security	E-shredding
Options	Adobe Postscript 3/PDF printing Adobe fonts: Chinese Traditional/Chinese Simplified/Japanese/Korean
SCANNER	
Description	Océ TC4 scanner with Océ Direct Scan color technology (single camera, single mirror)
Scan resolution	Optical 575 dpi, maximum 600 dpi
Scan speed	B&W: maximum 3.3"/sec (5 m/min.) Color: maximum 2.8"/sec (4 m/min.)
Scan format	TIFF, PDF, PDF/A, JPEG, CALS, multi-page PDF, multi-page PDF/A and multi-page TIFF
Scan destination	Network Directory, Smart Inbox
Original width	8"–40" (200–1016 mm)
Original length	8"–72" (200 mm–22 m)
Original thickness	Maximum 0.12" (3 mm) With thick originals option: maximum 0.59" (15 mm)
Zoom	10–1000 %
Preset modes	Lines & text, Map, Artwork, Photo, Grays & lines, Dark original, Blueprint
Size scanner (W x D x H)	51.2" x 25.6" x 51.2" (130 x 65 x 130 cm)
Weight scanner	154 lbs. (70 kg)
OPTIONS	
Hardware	Océ 2400 fanfold, Océ 4312 fullfold, delivery belts, 42-inch stacker, take-up unit
Software	Océ Repro Desk® Studio, Océ Repro Desk Select, Océ Repro Desk Professional

Canon

www.cla.canon.com

Canon U.S.A., Inc.
One Canon Park
Melville, NY 11747