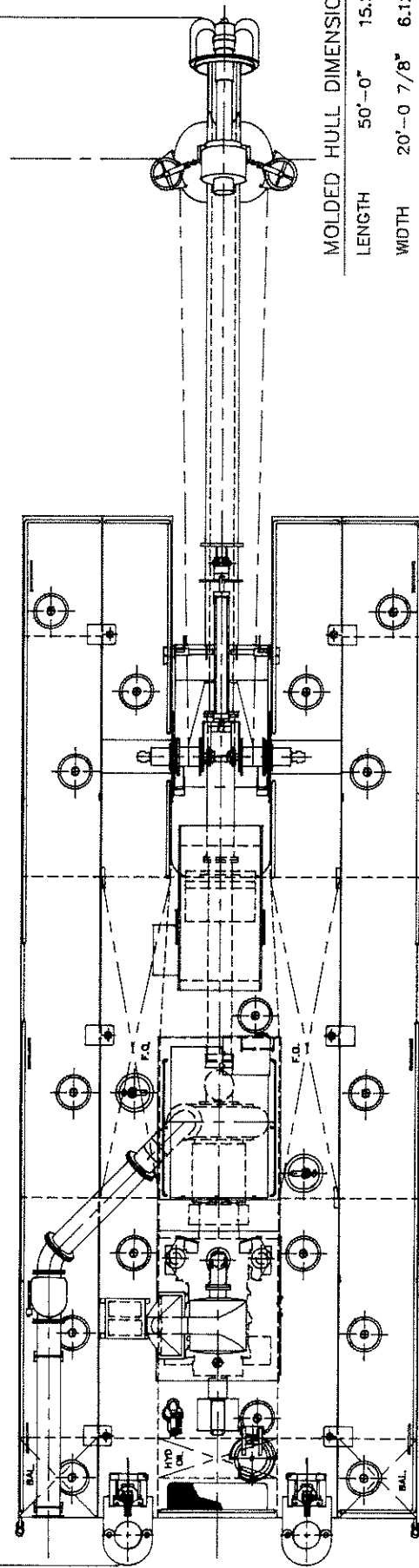


77'-0"
(23.47 METERS)



MOLDED HULL DIMENSIONS
 LENGTH 50'-0" 15.24 M
 WIDTH 20'-0 7/8" 6.12 M
 DEPTH 4'-0" 1.22 M

THIS DRAWING IS PRELIMINARY AND
 SUBJECT TO MODIFICATION AT
 FINAL DESIGN

DO NOT SCALE - ALL DIMENSIONS SHOWN WITHOUT DIMENSION LINES REFER TO DATUM LINE MARKED "0"

SERIES		SERIES		SERIES		SERIES		SERIES		SERIES	
670		670		670		670		670		670	
BY D.A.		BY D.A.		BY D.A.		BY D.A.		BY D.A.		BY D.A.	
MADE FROM		MADE FROM		MADE FROM		MADE FROM		MADE FROM		MADE FROM	
1 - PLACE DECIMAL 2.		1 - PLACE DECIMAL 2.		1 - PLACE DECIMAL 2.		1 - PLACE DECIMAL 2.		1 - PLACE DECIMAL 2.		1 - PLACE DECIMAL 2.	
2 - PLACE DECIMAL 3.		2 - PLACE DECIMAL 3.		2 - PLACE DECIMAL 3.		2 - PLACE DECIMAL 3.		2 - PLACE DECIMAL 3.		2 - PLACE DECIMAL 3.	
3 - PLACE DECIMAL 3.		3 - PLACE DECIMAL 3.		3 - PLACE DECIMAL 3.		3 - PLACE DECIMAL 3.		3 - PLACE DECIMAL 3.		3 - PLACE DECIMAL 3.	
ANGULAR MACHINED SURFACES # 30		ANGULAR MACHINED SURFACES # 30		ANGULAR MACHINED SURFACES # 30		ANGULAR MACHINED SURFACES # 30		ANGULAR MACHINED SURFACES # 30		ANGULAR MACHINED SURFACES # 30	
MACHINED SURFACE TEXTURE #1		MACHINED SURFACE TEXTURE #1		MACHINED SURFACE TEXTURE #1		MACHINED SURFACE TEXTURE #1		MACHINED SURFACE TEXTURE #1		MACHINED SURFACE TEXTURE #1	
DATE		DATE		DATE		DATE		DATE		DATE	
BY		BY		BY		BY		BY		BY	
CHK		CHK		CHK		CHK		CHK		CHK	
APPR.		APPR.		APPR.		APPR.		APPR.		APPR.	
90987		90987		90987		90987		90987		90987	
NO.4		NO.4		NO.4		NO.4		NO.4		NO.4	
143527		143527		143527		143527		143527		143527	

ELLICOTT MACHINE CORP. - 1986

ELLICOTT MACHINE CORP. INTL.
 BALTIMORE, MARYLAND, U.S.A.

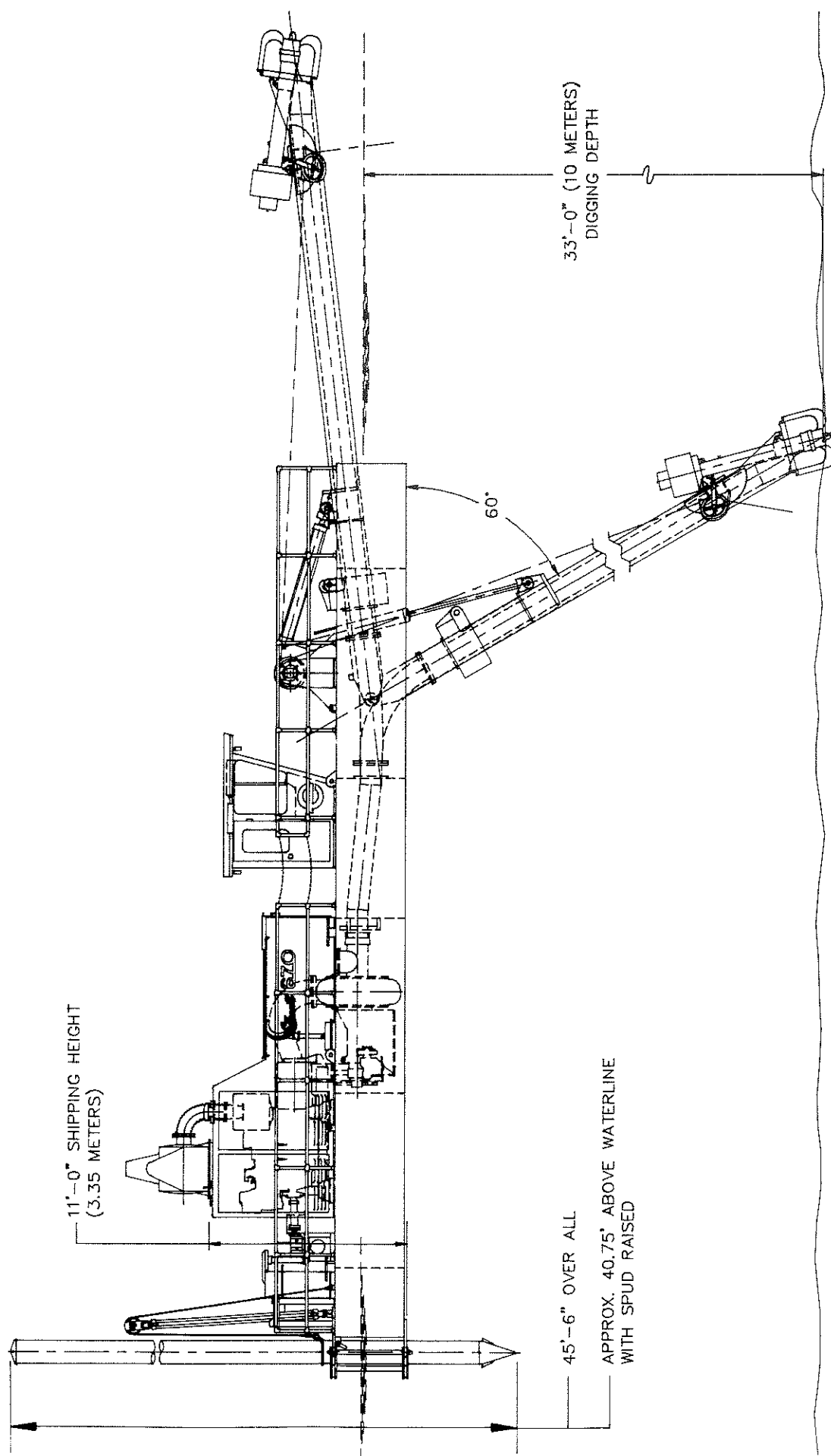
DR. P. JACKSON
 CHG.

DREDGE, PLAN & PROFILE

SCALE

DATE 17 AUG 1989

SH. 1 OF 2



DO NOT SCALE - ALL DIMENSIONS SHOWN WITHOUT DIMENSION LINES REFER TO DATUM LINE MARKED "0"

THIS DRAWING INCLUDES PROPRIETARY DATA WHICH IS THE EXCLUSIVE PROPERTY OF ELLICOTT MACHINE CORPORATION. NO PART OF THIS DRAWING OR REPRODUCTION THEREOF IS TO BE LOANED, REPRODUCED, COPIED, OR IN ANY MANNER DISCLOSED TO ANY OTHER PARTY WITHOUT THE WRITTEN PERMISSION OF ELLICOTT MACHINE CORP., INT'L.

© ELLICOTT MACHINE CORP. - 1989

8	REVISIONS	DATE	BY	DL
7				
6				
5				
4				
3				
2				
1				

UNLESS OTHERWISE SPECIFIED, ALL DIMENSIONS ARE IN INCHES UNLESS INDICATED OTHERWISE.

670
SST D.D.
MADE FROM

UNLESS OTHERWISE SPECIFIED, ALL DIMENSIONS ARE IN INCHES UNLESS INDICATED OTHERWISE.

1 - PLACE DEBRIS IN
2 - PLACE DEBRIS IN
3 - PLACE DEBRIS IN

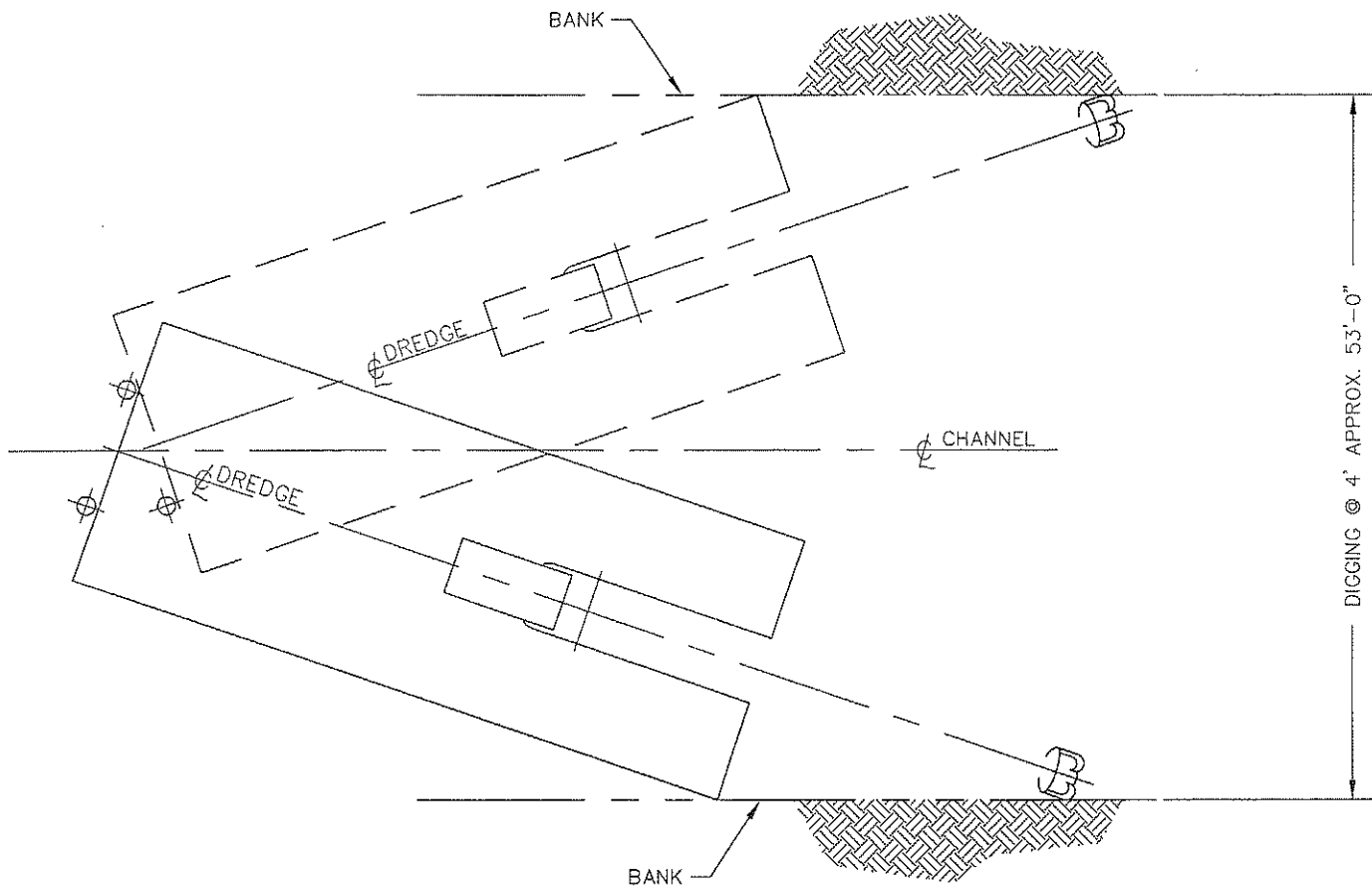
ANGULAR MARKED SURFACES ± 30'
MARKED SURFACE TEXTURE ✓

ELLICOTT MACHINE CORP. INT'L.
DREDGE DIVISION
BALTIMORE, MARYLAND, U.S.A.

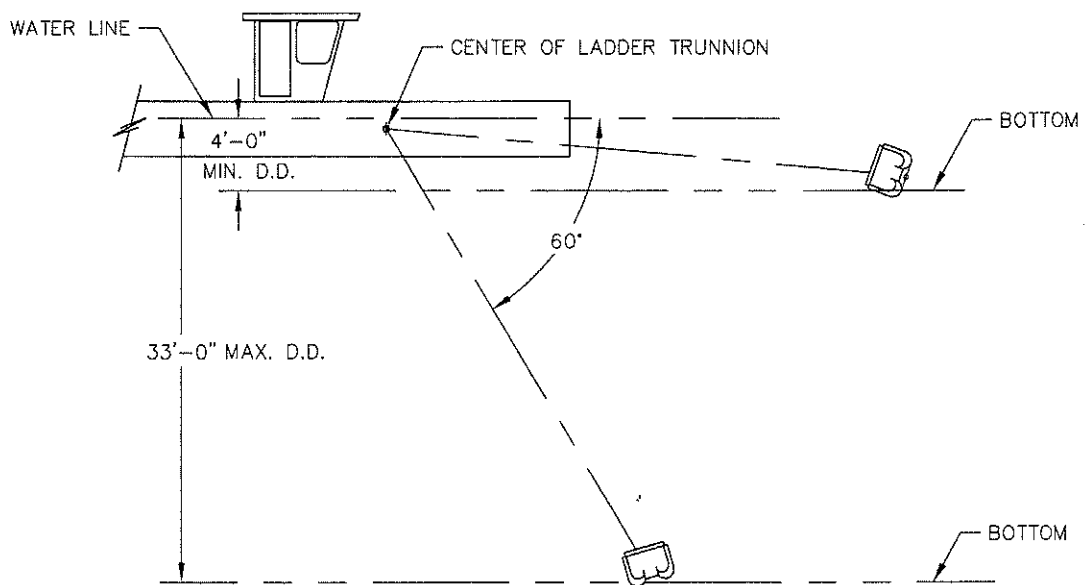
DR. P. JACKSON
CHK.

SCALE DATE 17 AUG 1989

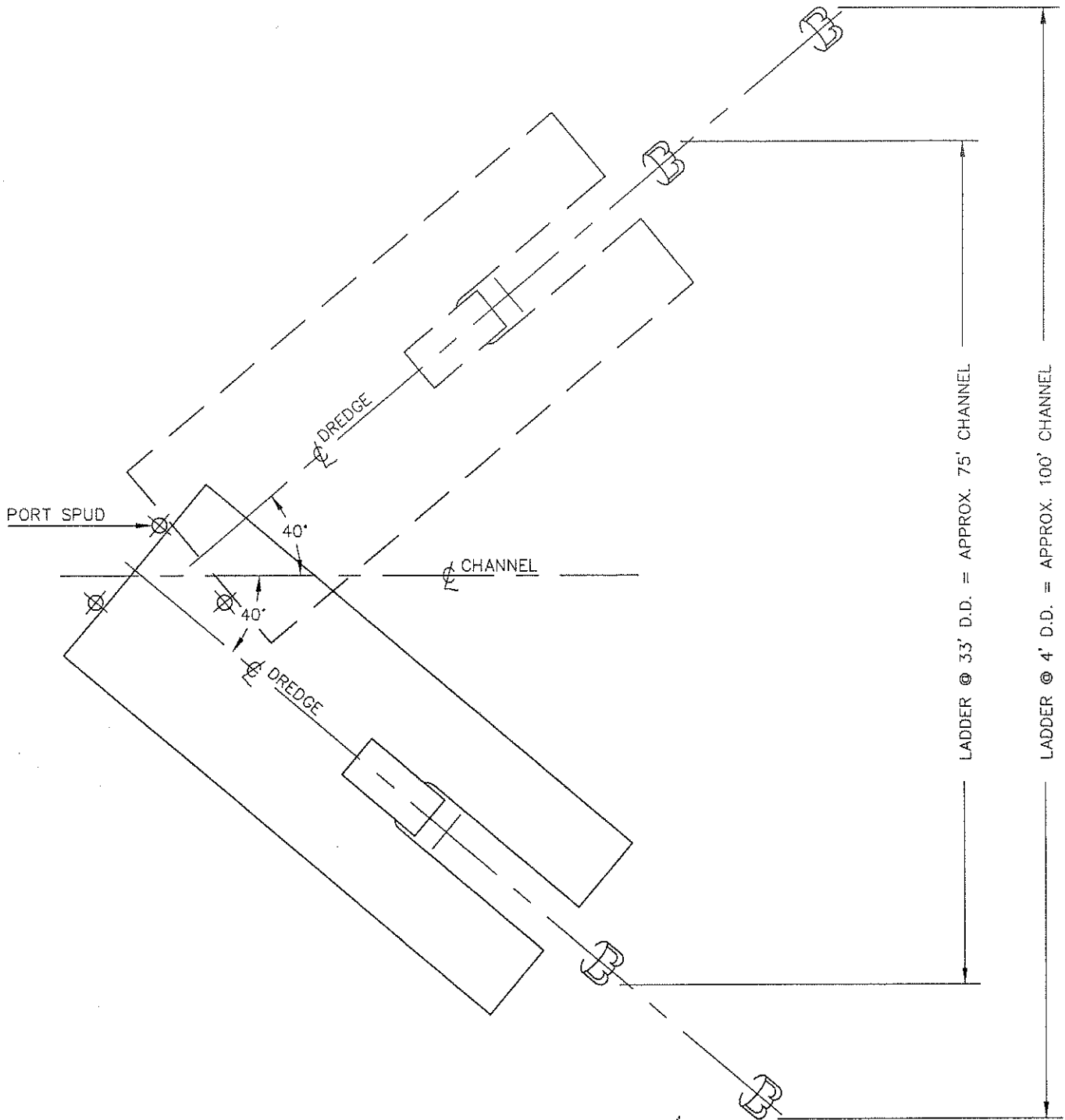
FIRST USED 90987
APPR. NO.4 143527



MINIMUM WIDTH OF CHANNEL IN WHICH DREDGE WILL CLEAR WHEN DIGGING IN HULL GROUNDING CONDITION



ELEVATION SHOWING MINIMUM & MAXIMUM DREDGING DEPTHS



MINIMUM WIDTH OF CHANNEL DREDGE WILL CUT
BASED ON A 40° SWING ABOUT PORT SPUD

SERIES
670
33 FT. D.D.